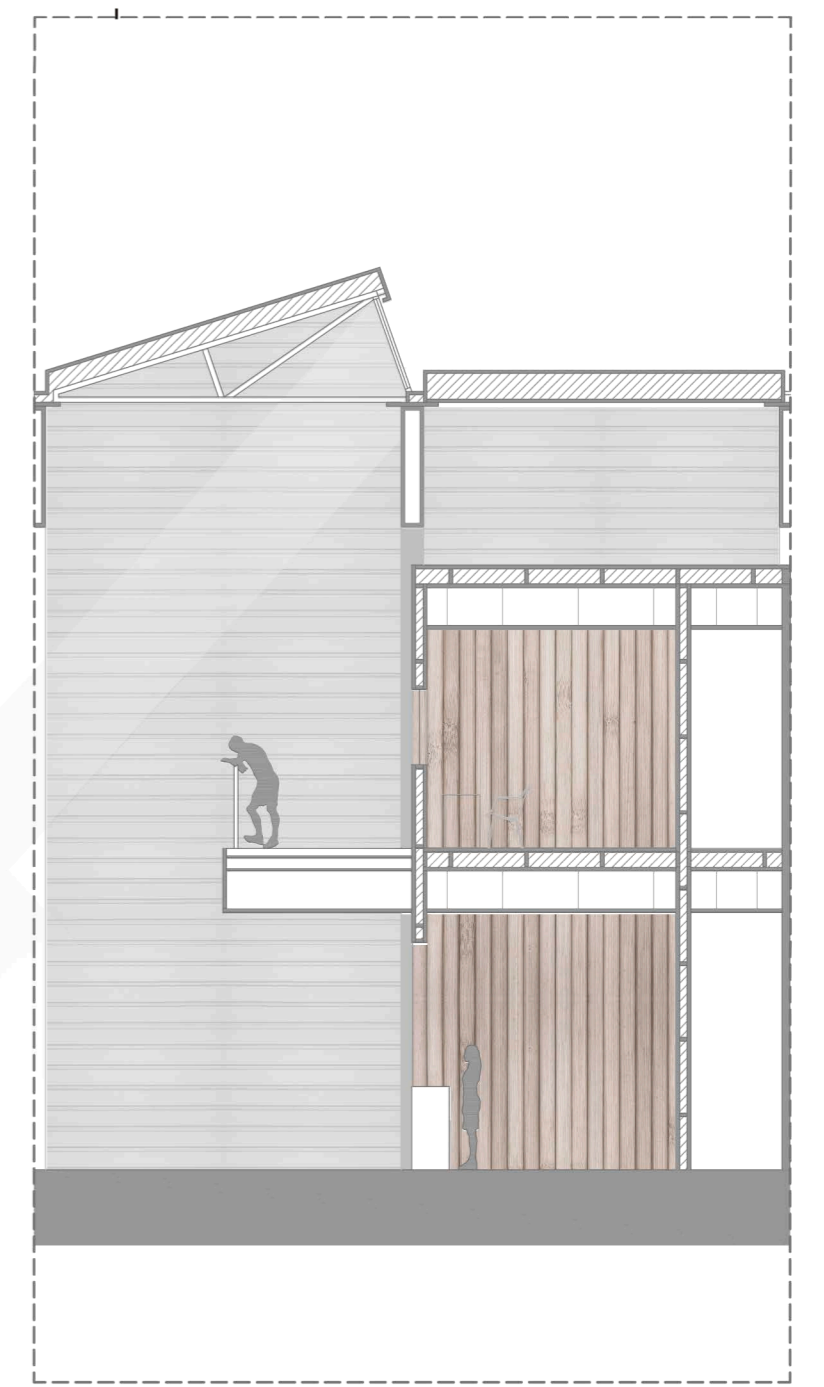
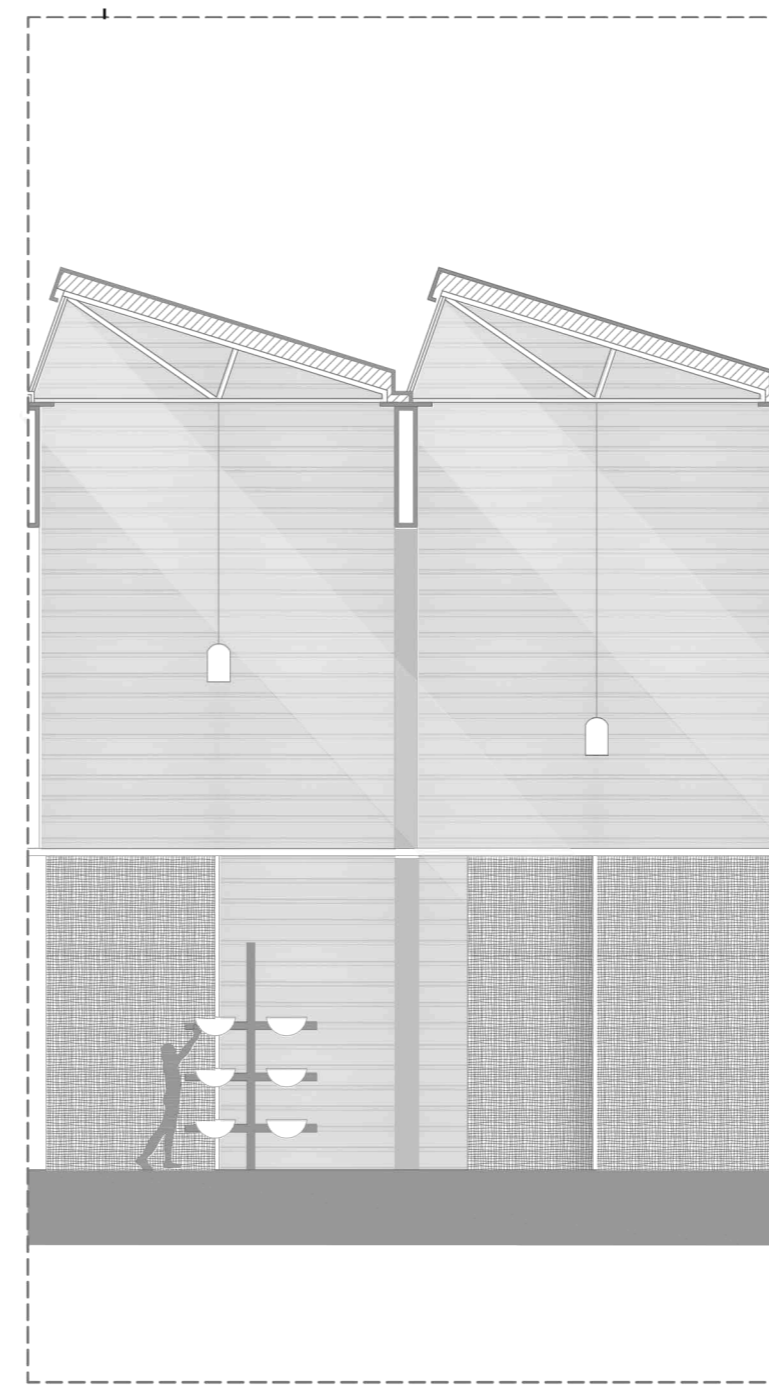
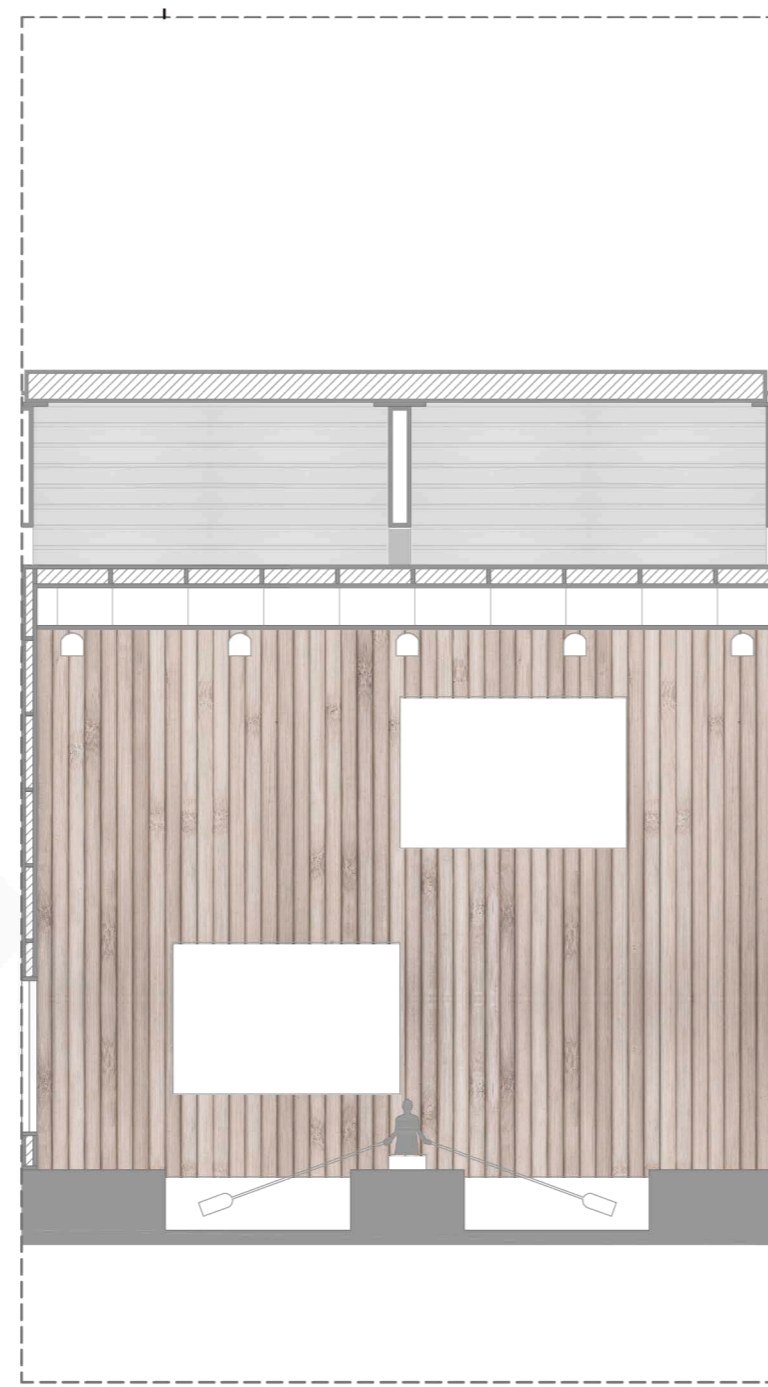
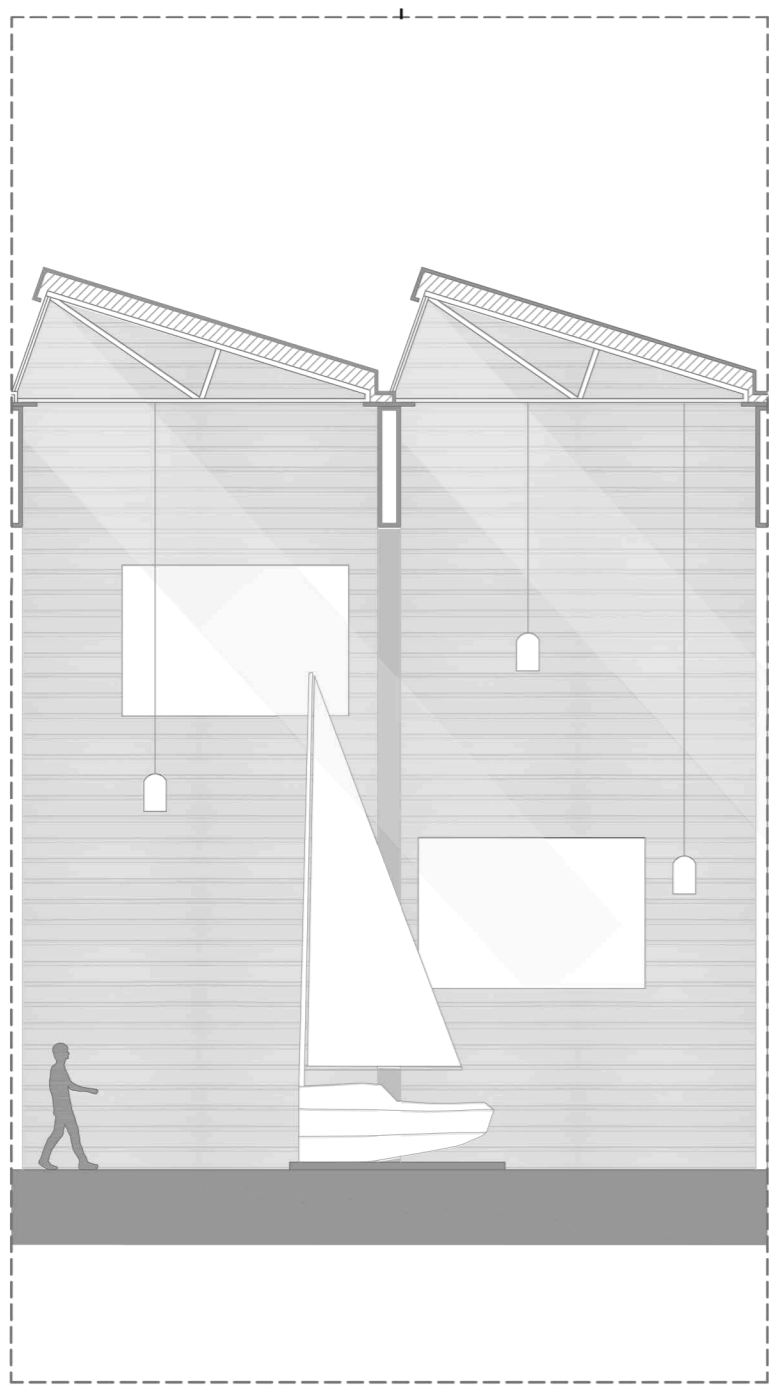
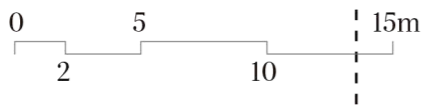
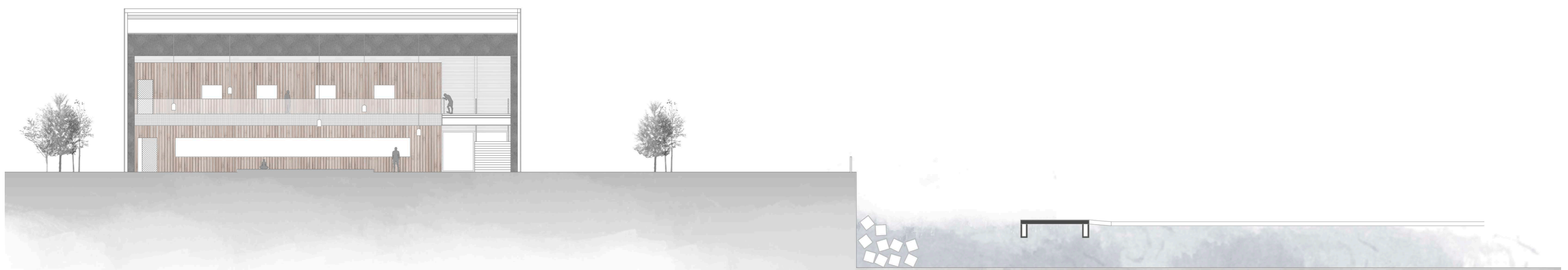
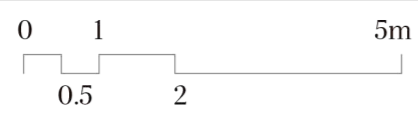


Sección longitudinal E 1/300



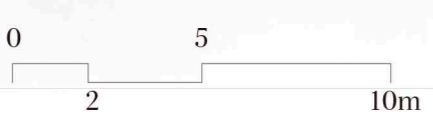
Detalles de sección E 1/100



Sección transversal I E 1/200



Sección transversal II E 1/200



CENTRO DE DEPORTES ACUÁTICOS EN LA DÁRSENA DE SESTAO

Alumna Natalia Lázaro Herranz Tutor Luis Ramón Sesé Madrazo  
Escuela Técnica Superior de Arquitectura de San Sebastián a 18 de septiembre de 2015



© 2015, Natalia Lázaro Herranz