

KULTUR ETA AISIALDI GUNEA ONDARTXON
proiektuaren garapena - MAL 2019-2020

ikaslea: Aitzpea Adrian Artola

epaimahaia: A

01 SARRERA

ZER

NON

ZERGATIK

NON

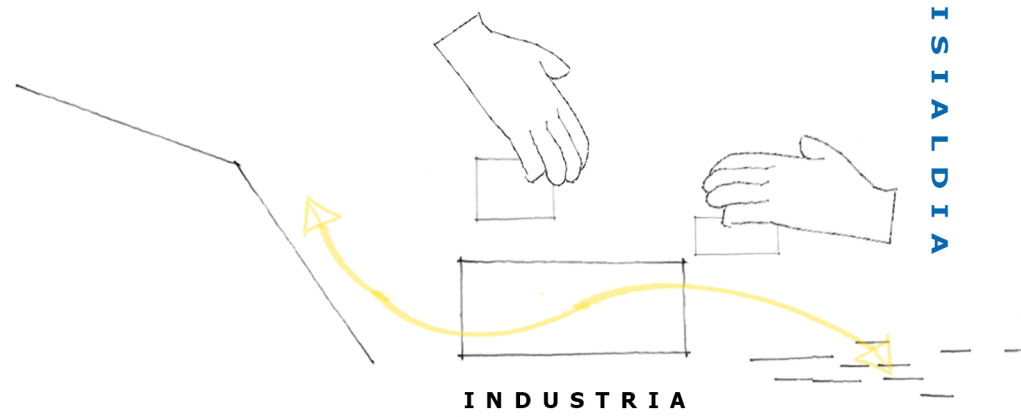
PASAI A



ZER

KULTURA

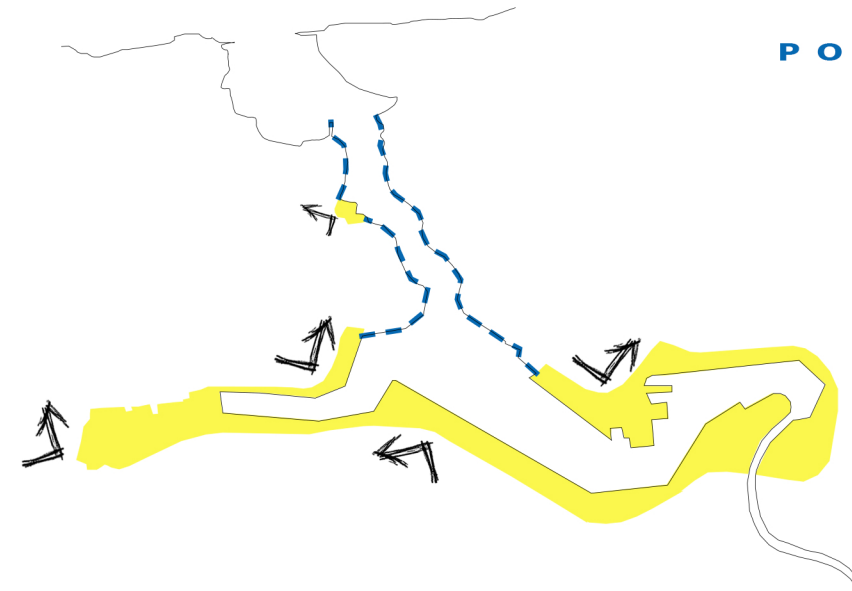
AISIALDIA



ZERGATIK

PORTUA

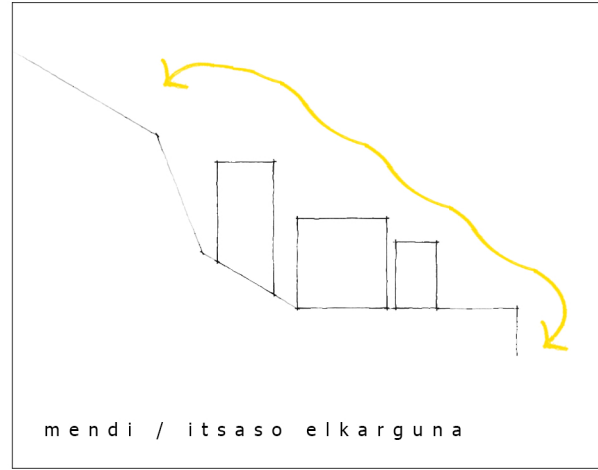
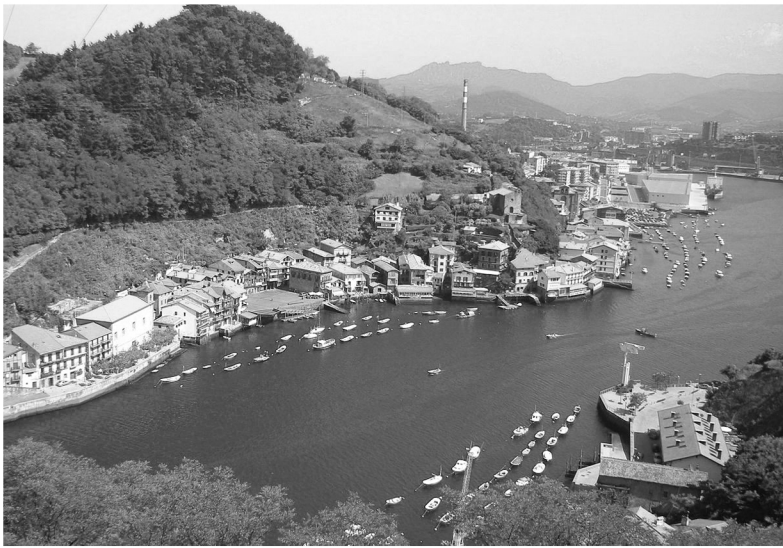
INTEGRAZIOA



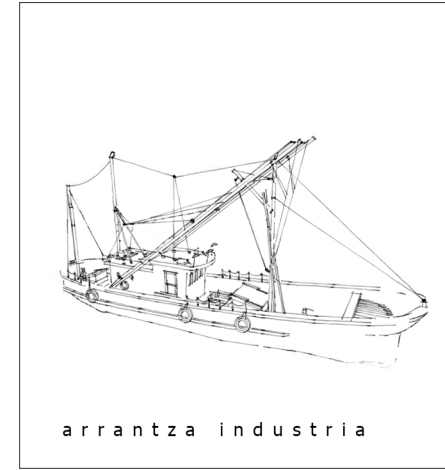
ITSASOA - HERRIA

02 TESTUINGURUA

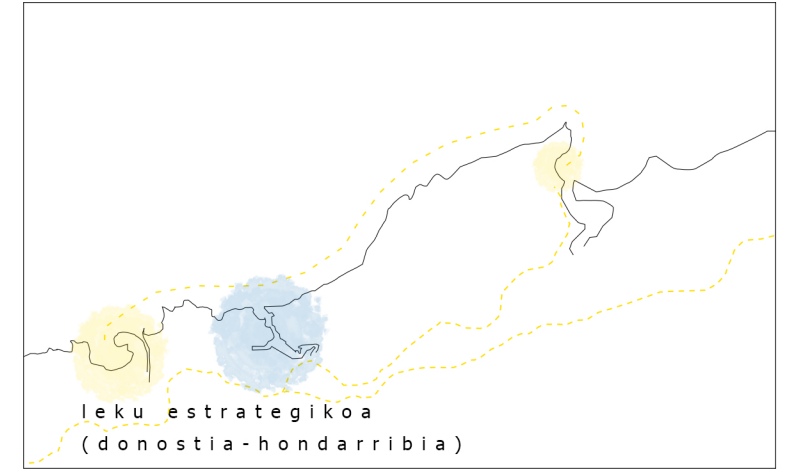
PASAIA HERRIA



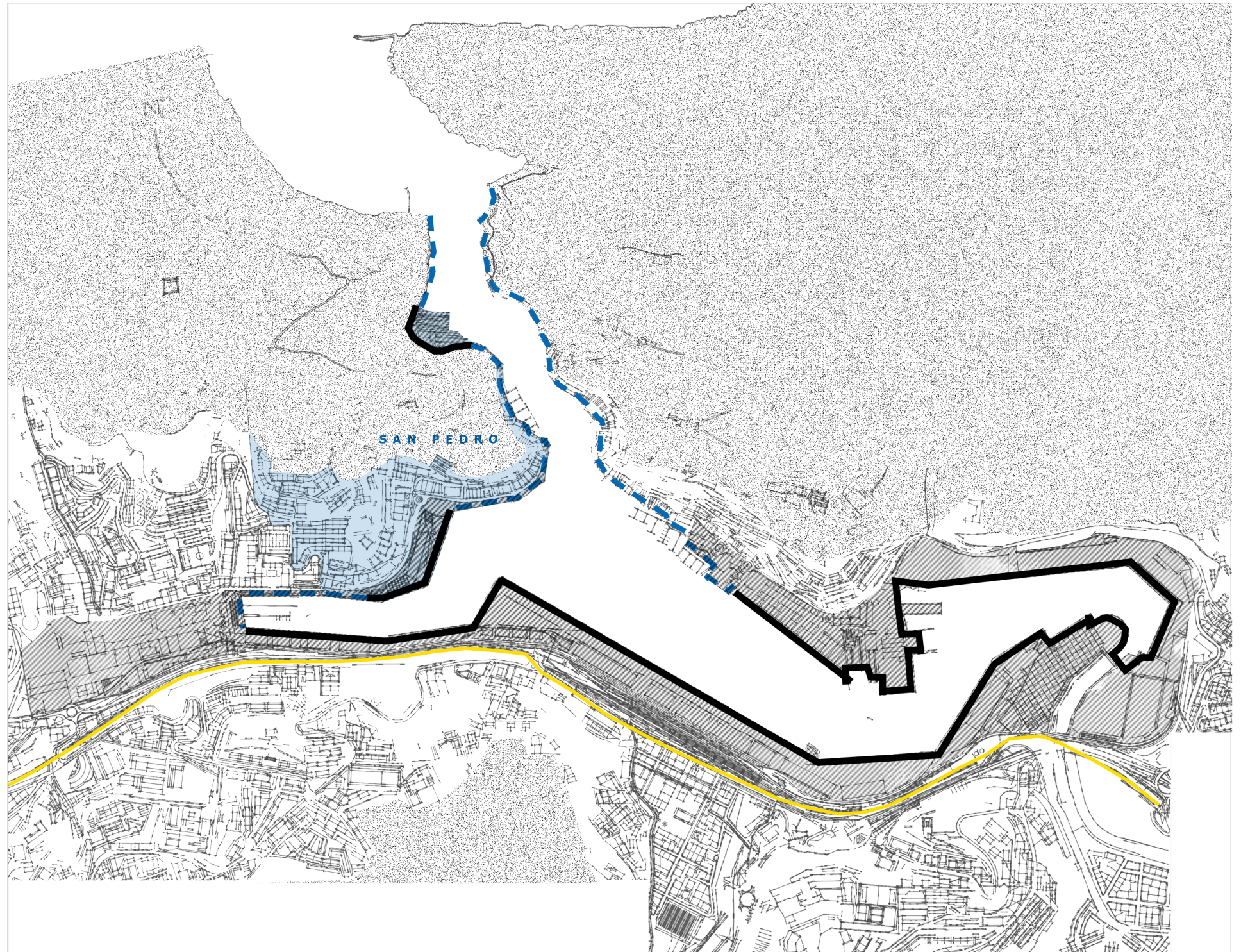
mendi / itsaso elkarguna



arrantza industria



leku estrategikoa
(donostia-hondarribia)



03 METODOLOGIA

EKIPAMENDUEN BERRANTOLAKETA

PORTUA: INTEGRAZIOA

E K I P E M A N D U E N B E R R A N T O L A K E T A

#misto, konpaktu, funtzionala



0 1

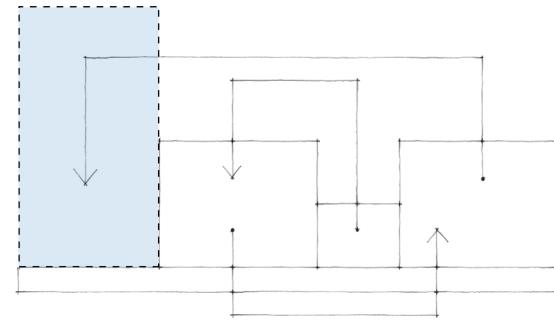


0 2

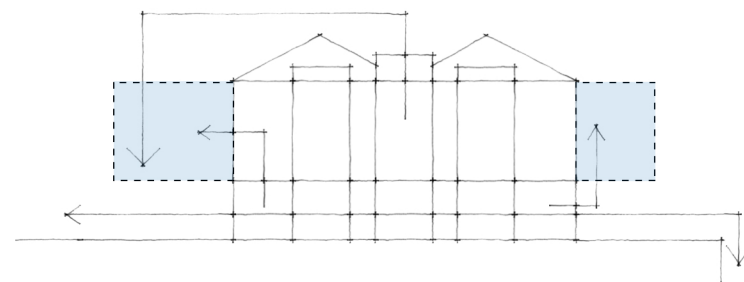


0 3

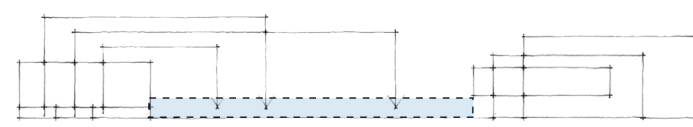
- 1.- Ekipamendu **GEHIAGO**
- 2.- Ekipamenduek beste arlo batekin dituzten **LOTURAK BERRANTOLATU**



(trintxerpeko azoka - antolamendua)



(antxoko azoka - ibaia/plaza)



(donibane kalea - parking)

PORTUA

#integrazioa

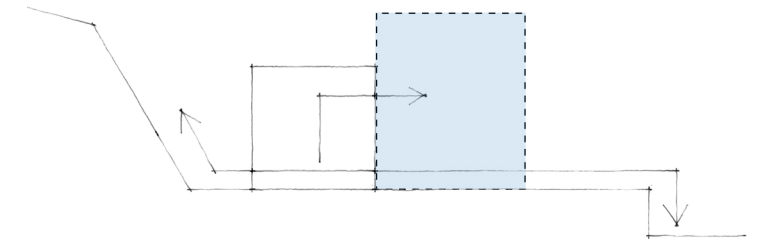
- 1.- Orubeak **DETEKTATU**
- 2.- Orubek **KLASIFIKATU**
- 3.- Orubeak **EGOKITU**



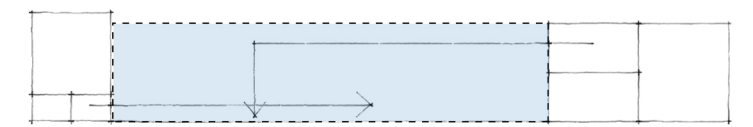
0 4



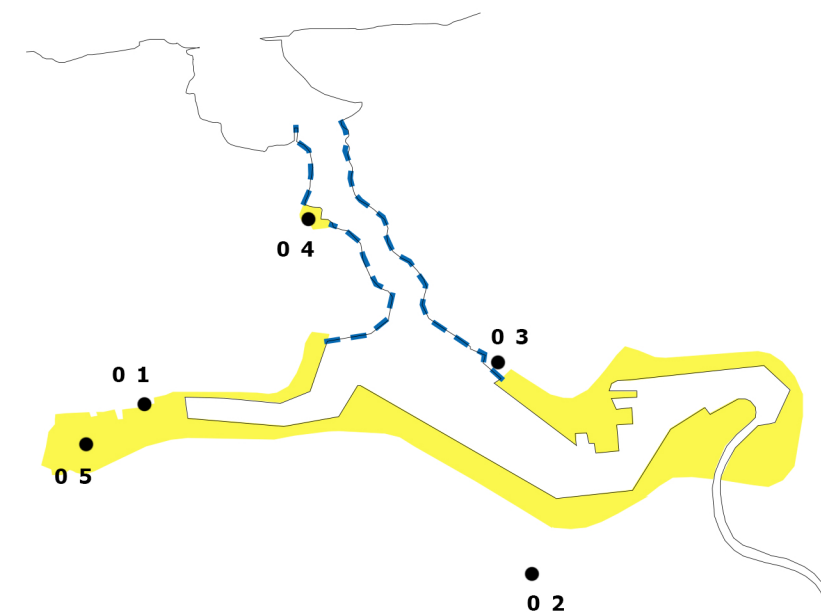
0 5



(ondartxo ontziola - itsaso/mendia)



(la herrera - industria/herria)

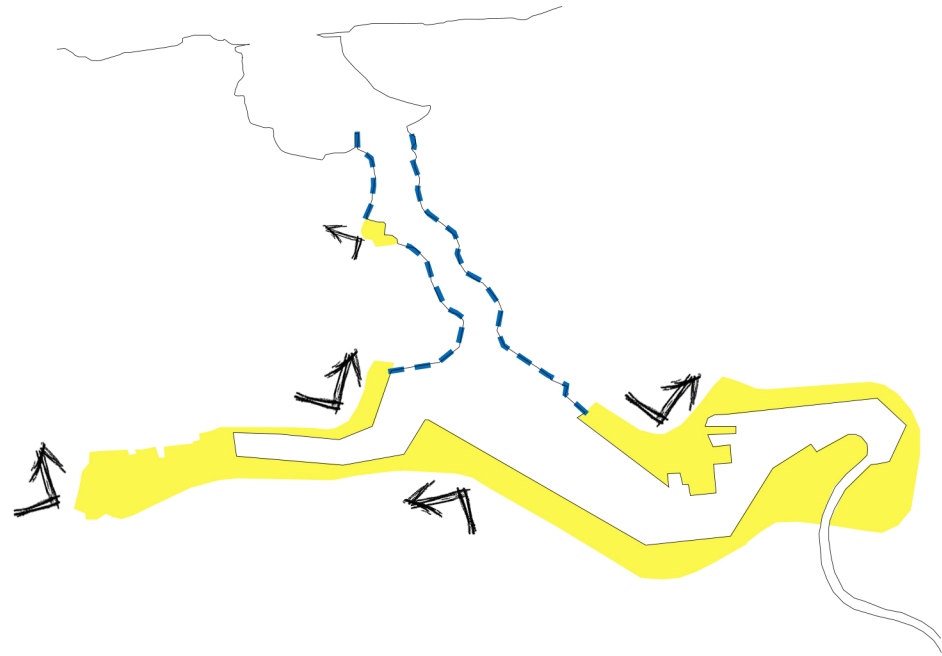


04 INTERBENTZIO EREMUA

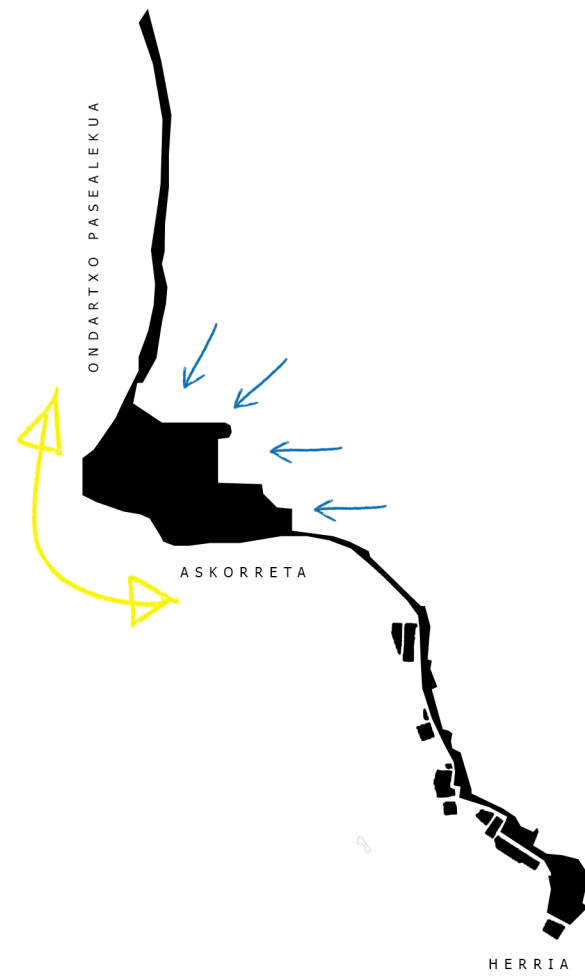
KOKAPENA ETA INGURUKO ERAGILEAK

GUNEAREN ANALISIA

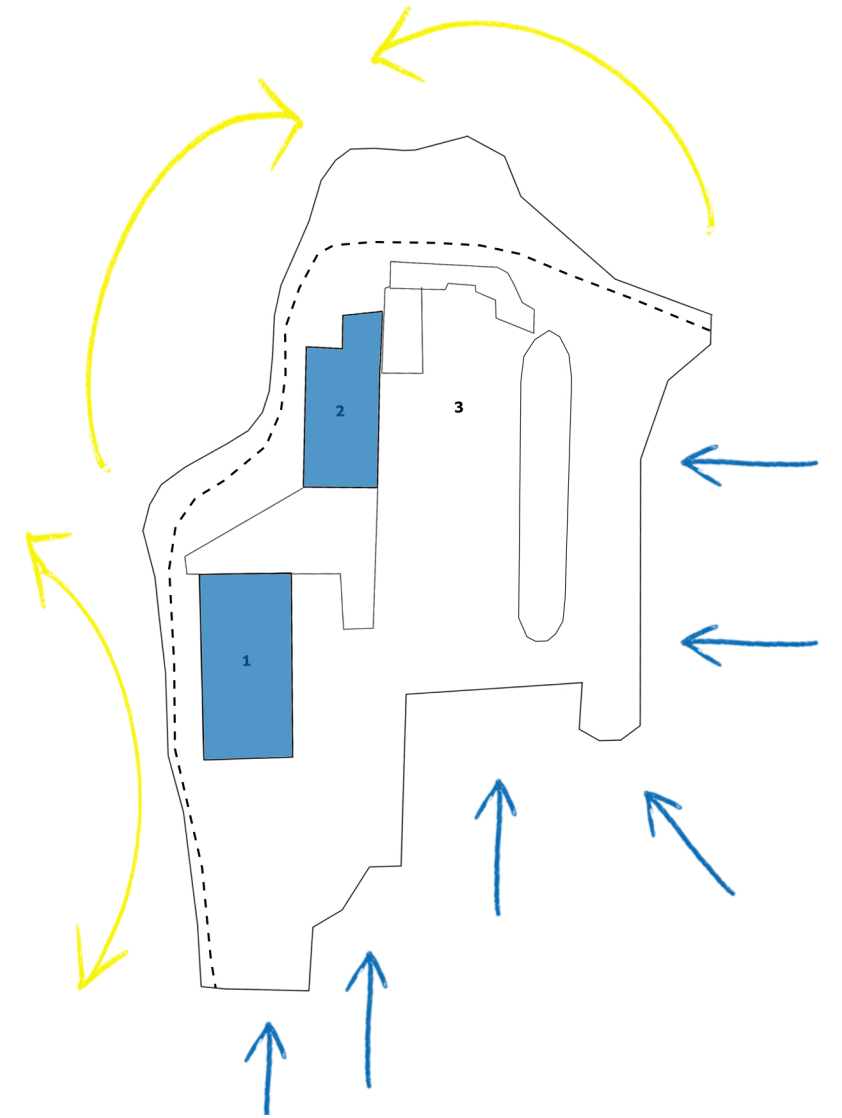
PORTUAREN INTEGRAZIOA
#Metodologia praktikan jarriz



ONDARTXO
#Interbentzio eremua



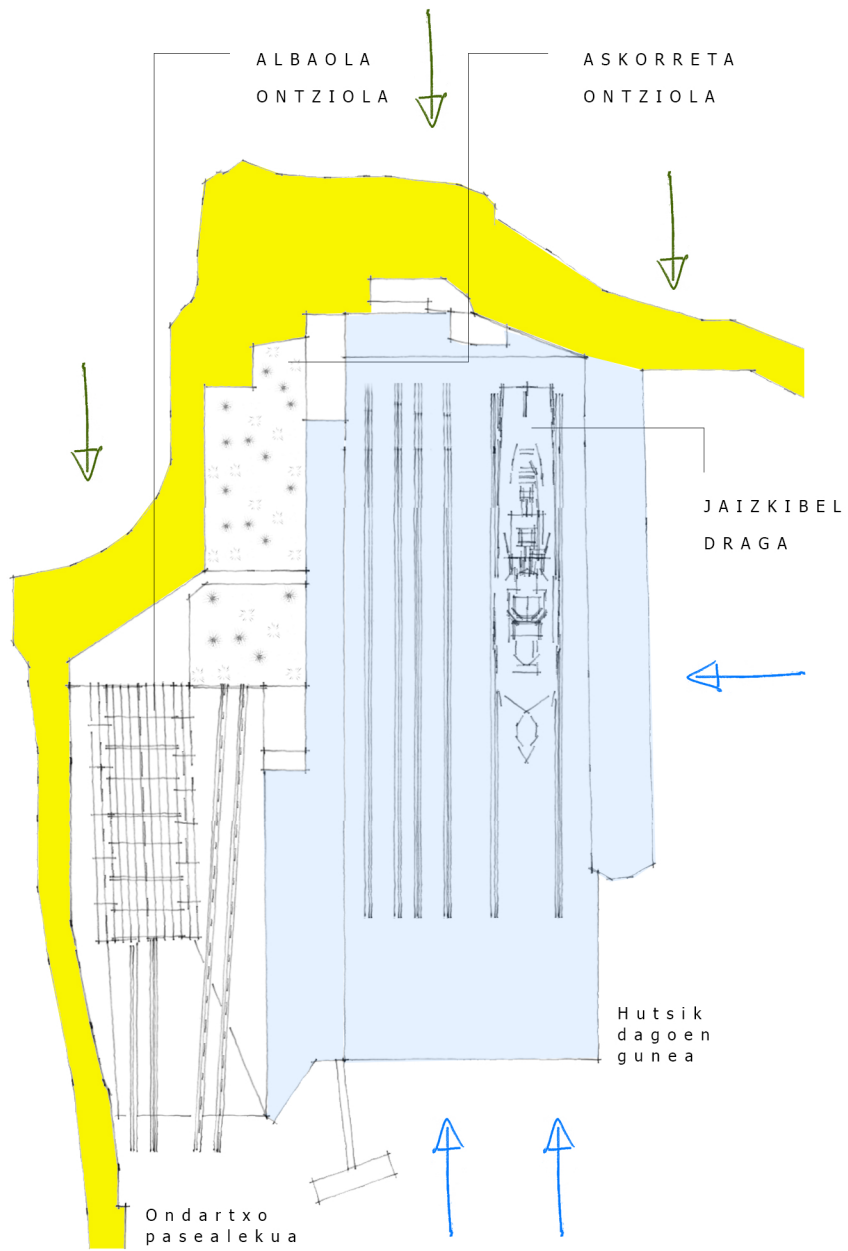
AUKERATUTAKO ORUBEAREN ANALISIA
#Hutsune+ekipamendu berrantolaketa



04 INTERBENTZIO EREMUA

ASKORRETA ORUBEA

#kokapena / inguruko eragileak



Badiaren sarrera, askorreta orubearen kokalekua



Gune erabiliaren ekialdeko bista



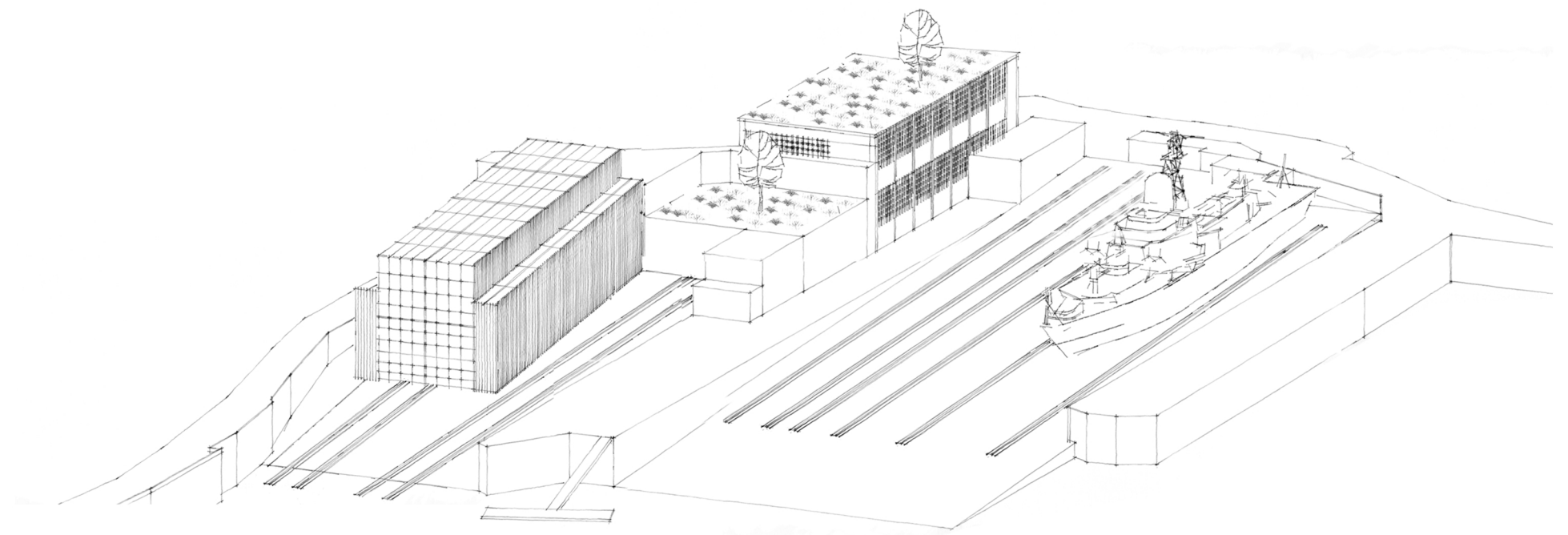
Orubearen bista orokorra

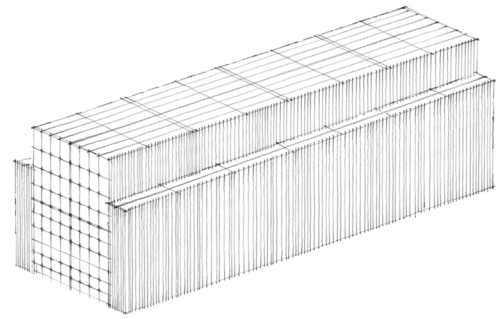


Jaizkibel draga



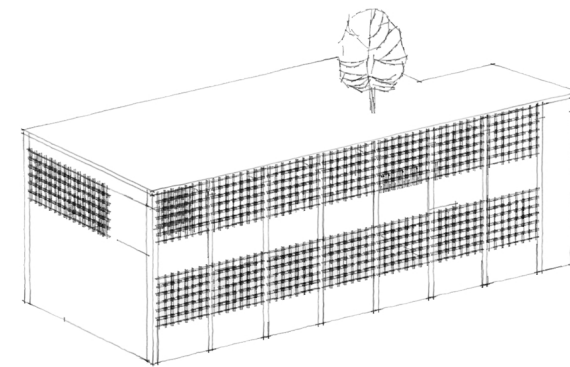
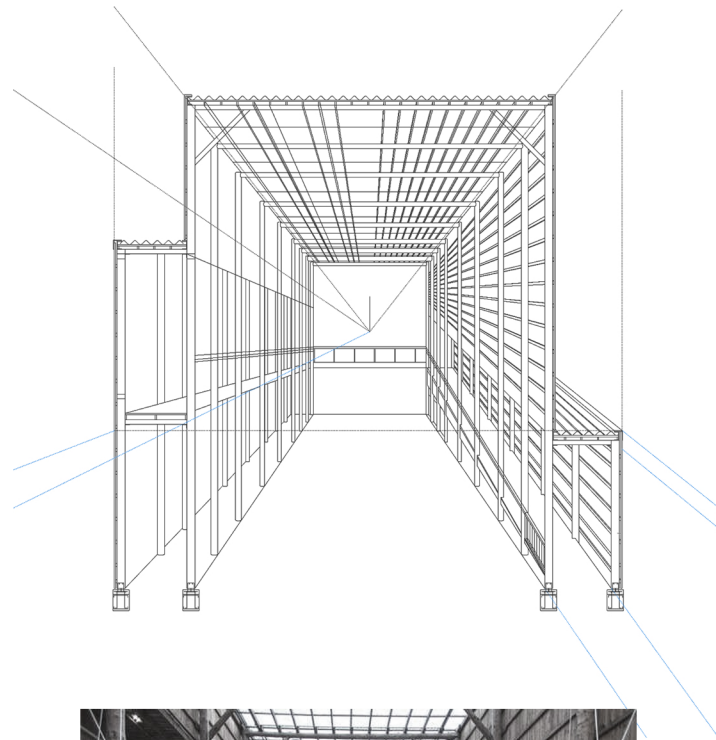
Pasealekutiko bista orokorra





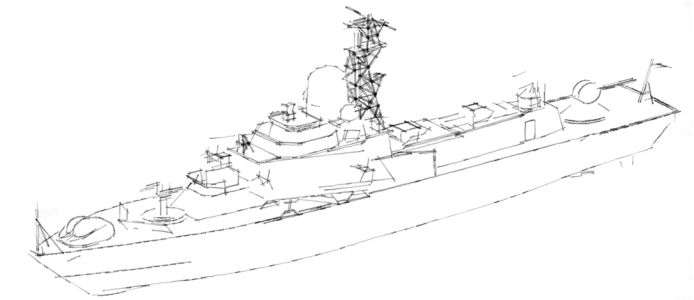
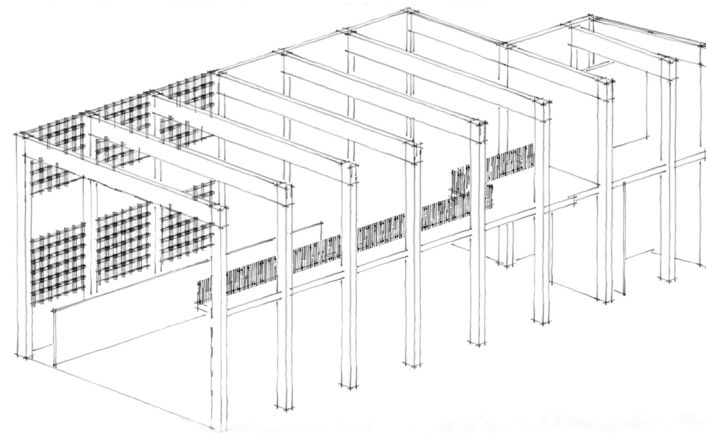
ALBAOLA ONTZIOLA
San Juan baleontziaren errepliak

Azalera: 170m²
Solairuak: 1,2
Eraikitze urtea: 2013
Materialtasuna: Zura + polikarbonatoa



ASKORRETA ONTZIOLA
Tailerra

Azalera: 143m²
Solairuak: -1,1,2
Eraikitze urtea: 1960
Materialtasuna: Hormigoi armatua + altzairua + beira + estalki begetala.



JAIZKIBEL DRAGA
Erabilerarik ez

Eslora entre perpendiculares	60,00 metros
Eslora Total	60,20 metros
Manga extrema	10,50 metros
Puntal	4,00 metros
Arqueo Bruto	703 toneladas
Arqueo Neto	327 toneladas
Desplazamiento máximo de carga	900 toneladas
Tipo de máquina	Vertical de triple expansión
Potencia de la máquina (125 r.p.m.)	300 H.P.
Potencia de la máquina (165 r.p.m.)	450 H.P.
Calado Máximo	2,10 metros
Velocidad	6,75 millas
Capacidad de dragado	300 m/hora
Profundidad de dragado	3-17 metros

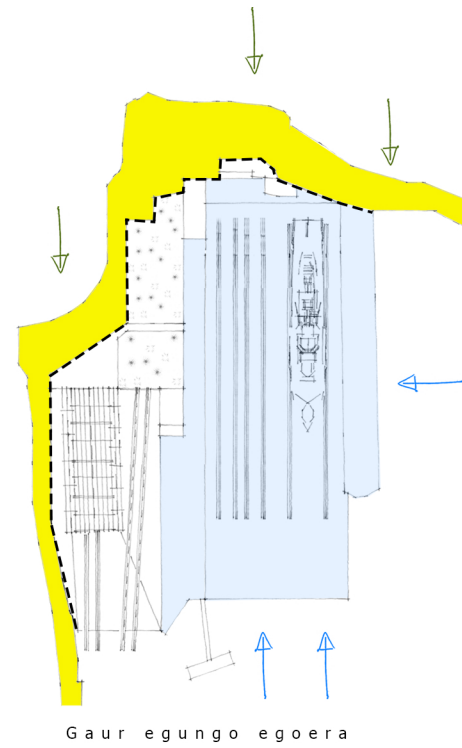


05 PROIEKTUA

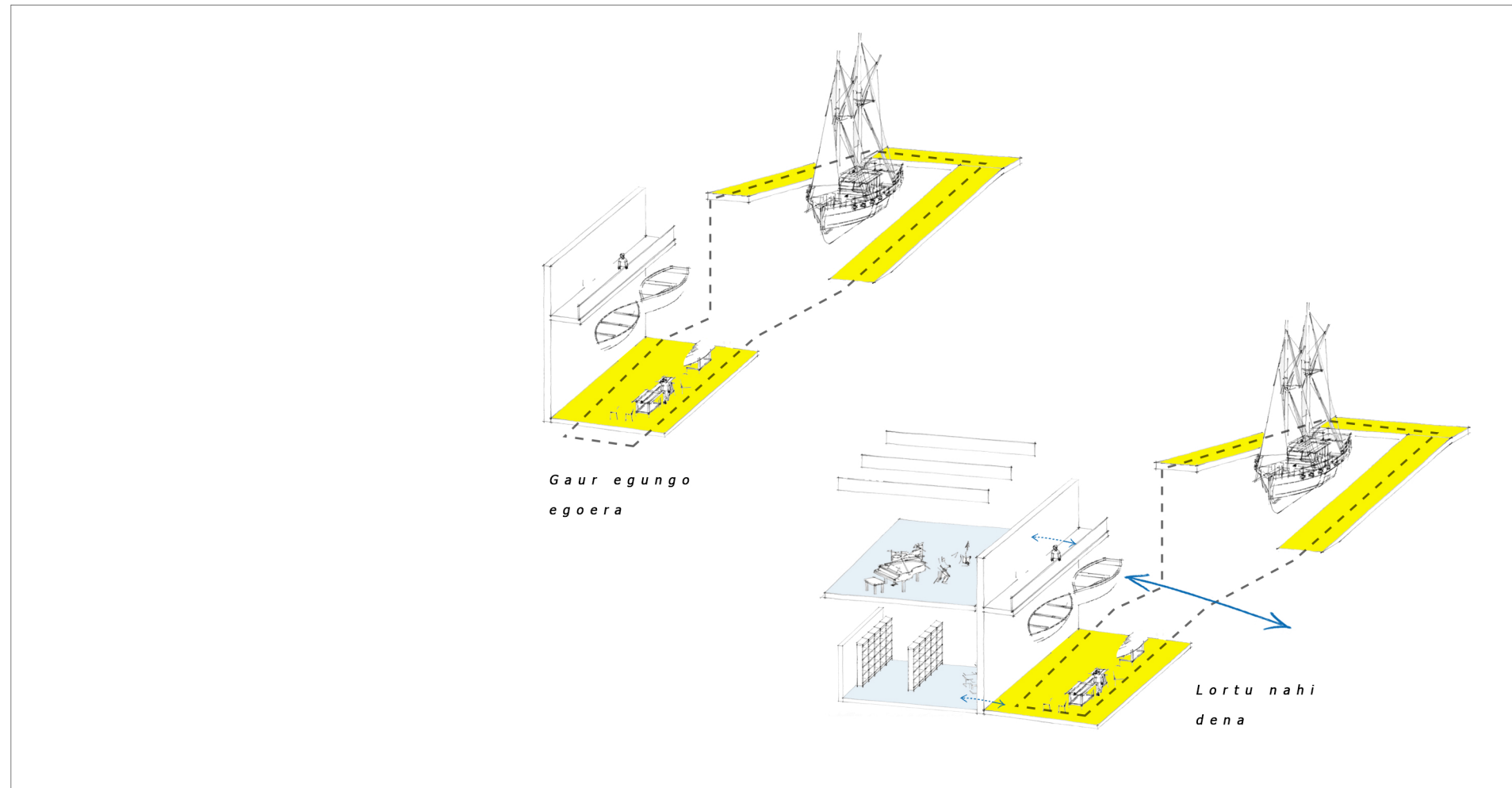
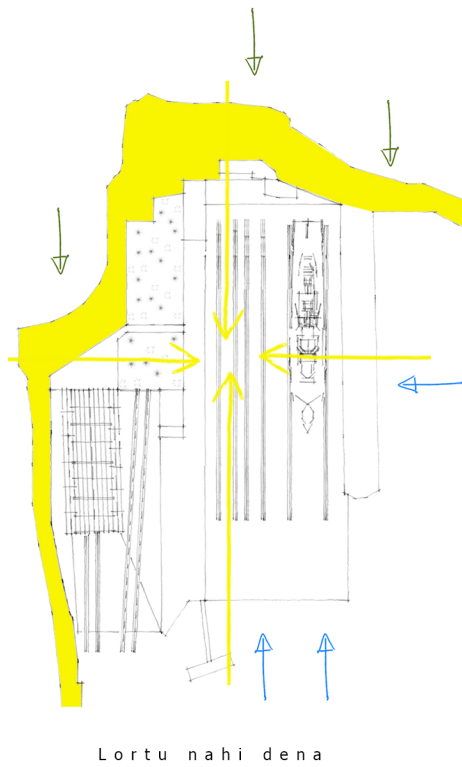
IDEIA ETA PROGRAMA

HELBURUAK

DOKUMENTAZIO GRAFIKOA



EREMU DIAFANOA
INGURUAREKIKO ERLAZIO ZUZENA



ONTZIGINTZA INDUSTRIA

NATURA

KULTURA

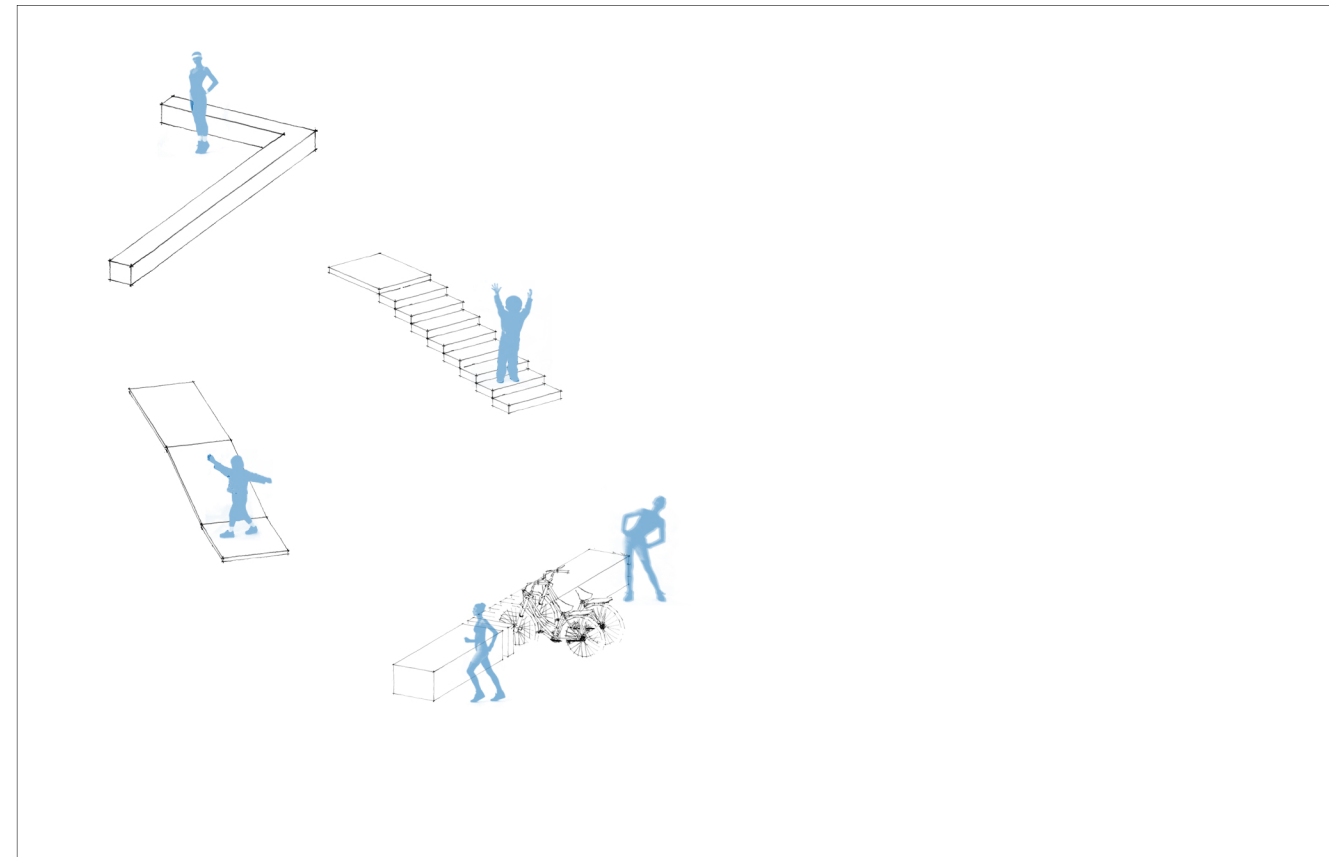
AISIA

EKIPAMENDU PUBLIKOA

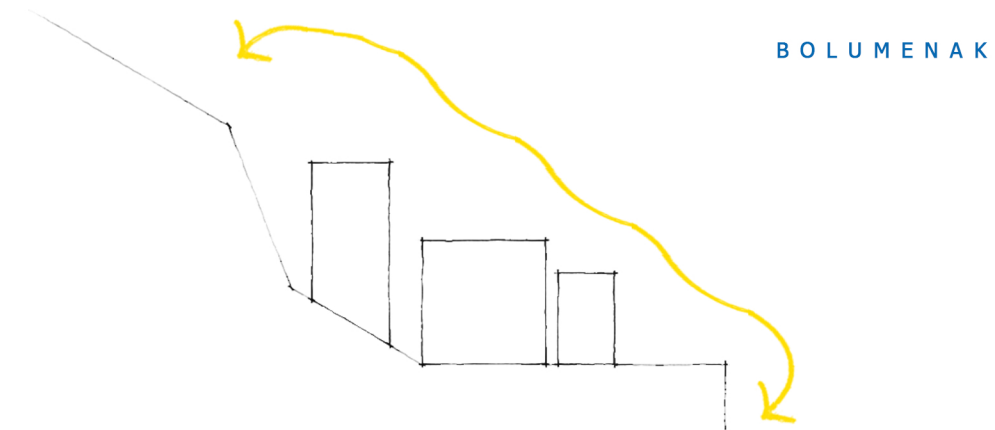
MENDI

ITSASOA

HIRIGINTZA

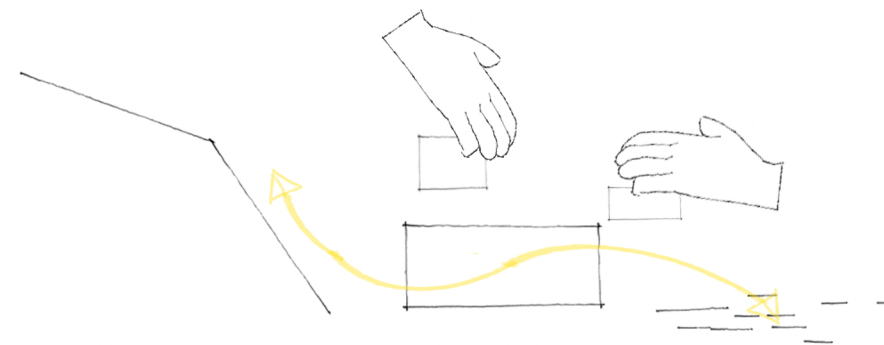


1.- MENDI (HERRI) - ITSASO KONEXIOA



HIRIGINTZA

2.- ERABILERA DESBERDINEN KONEXIO EGOKIA

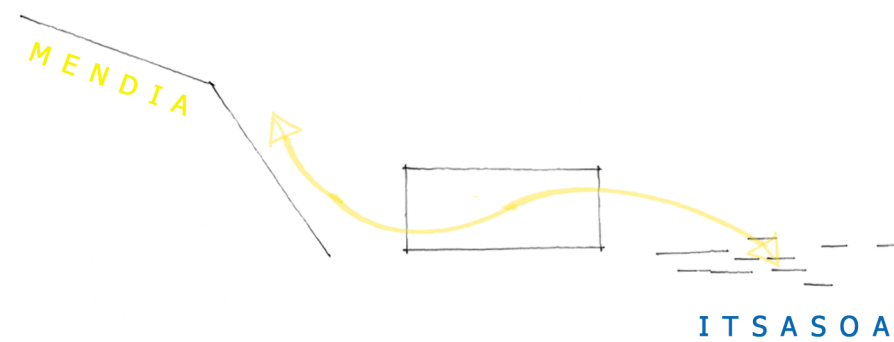


ERAIKUNTZA

SUTEAK

EGITURA

3.- INGURUAREKIKO ERRESPETU ETA KOHERENTZIA



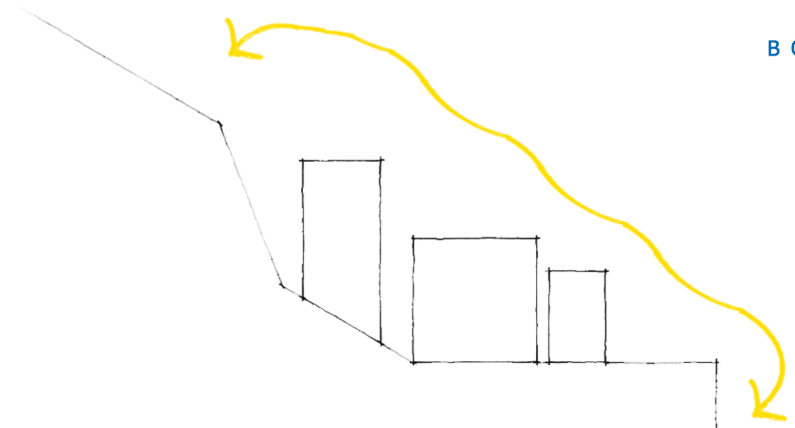
AIREZTAPENA

BEORKUNTZA

TERMIKA

ERAIKUNTZA

**1.- MENDI (HERRI) - ITSASO
KONEXIOA**



BOLUMENAK

SARRERAK

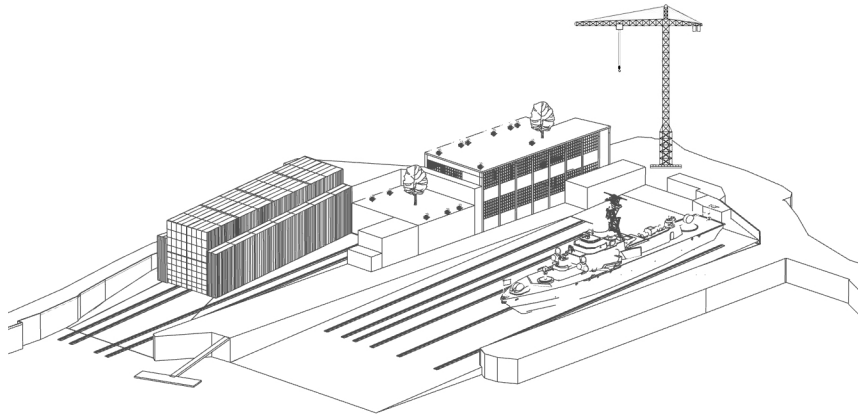
HIRIGINTZA

PROIEKTUAREN GARAPENA

1.- MENDI (HERRI) - ITSASO KONEXIOA

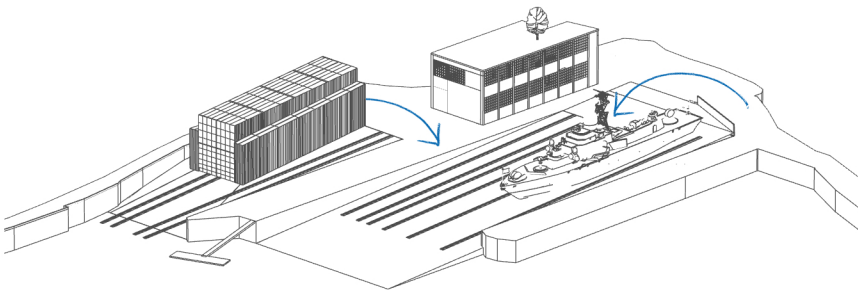
1

ERAISPENA



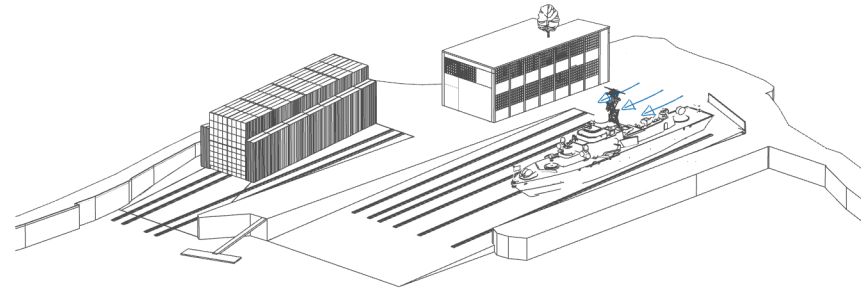
2

MENDI-ITSASO ERLAZIOA



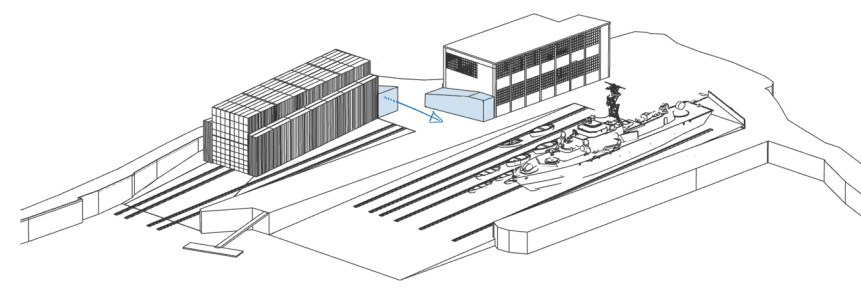
3

ORUBEAREN MOLDAKETA



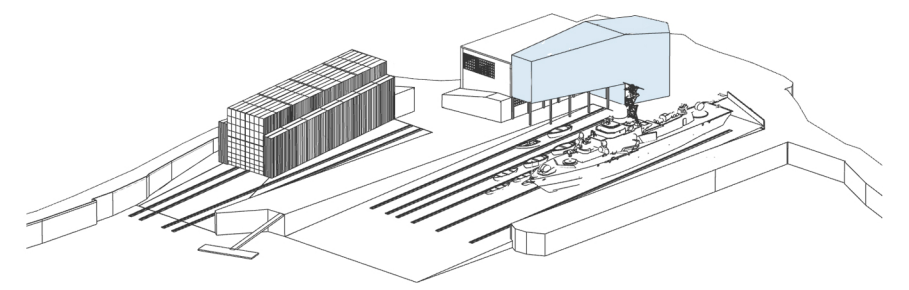
4

BI ONTZIOLEN ERLAZIOA



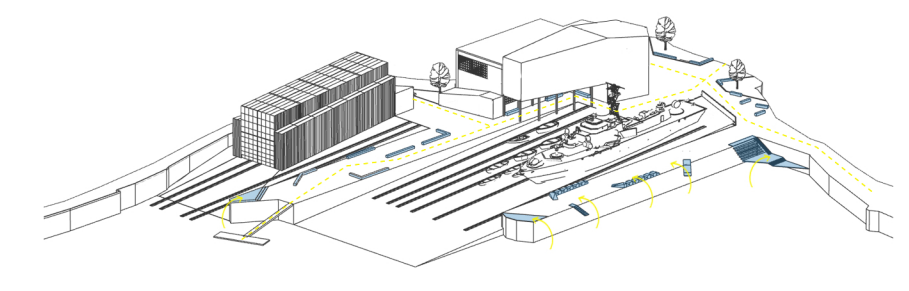
5

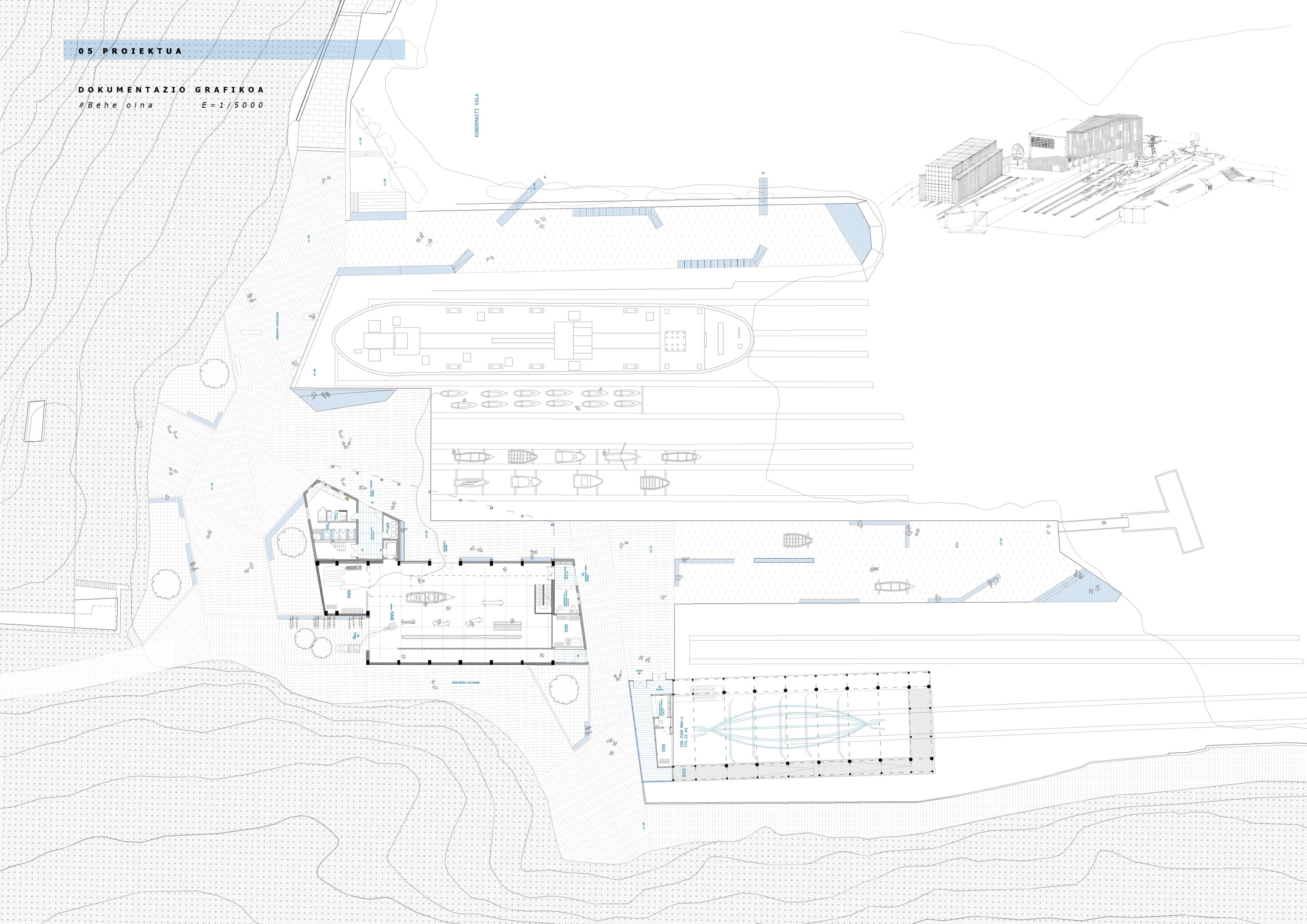
KULTUR / AISI ERABILERA

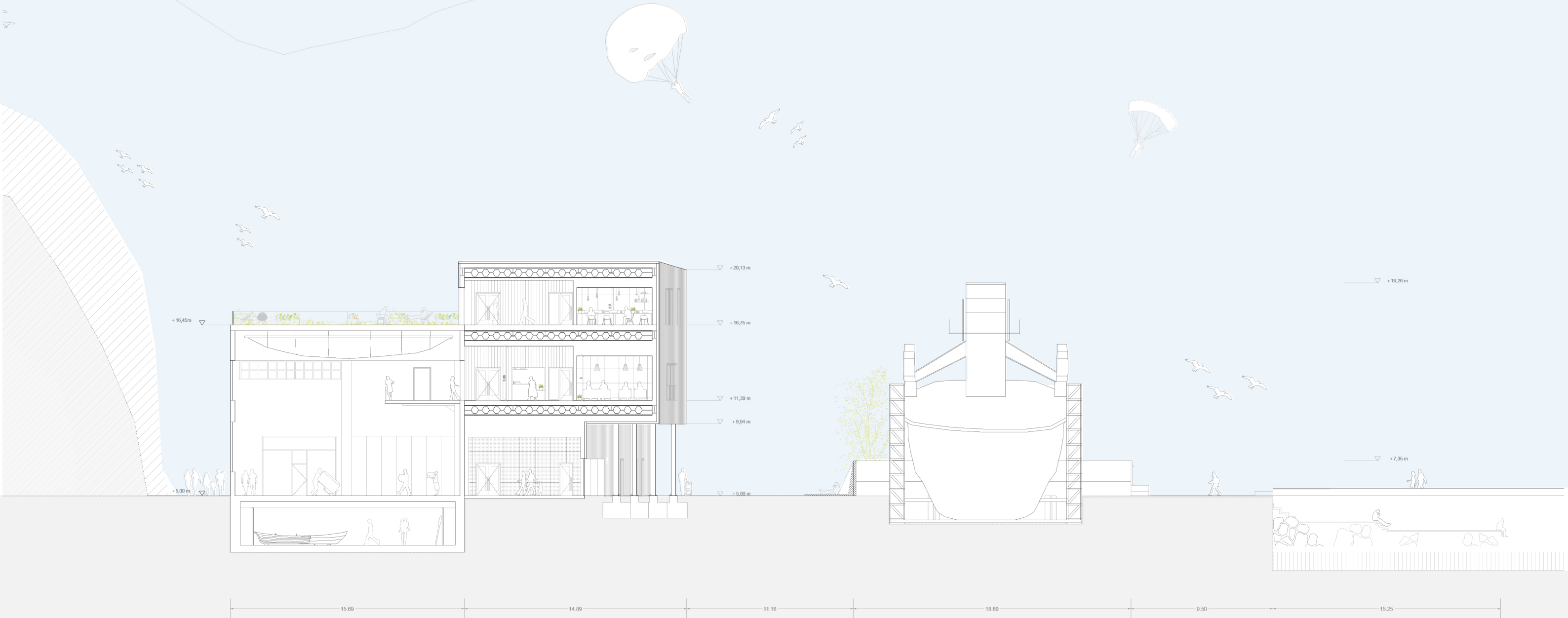
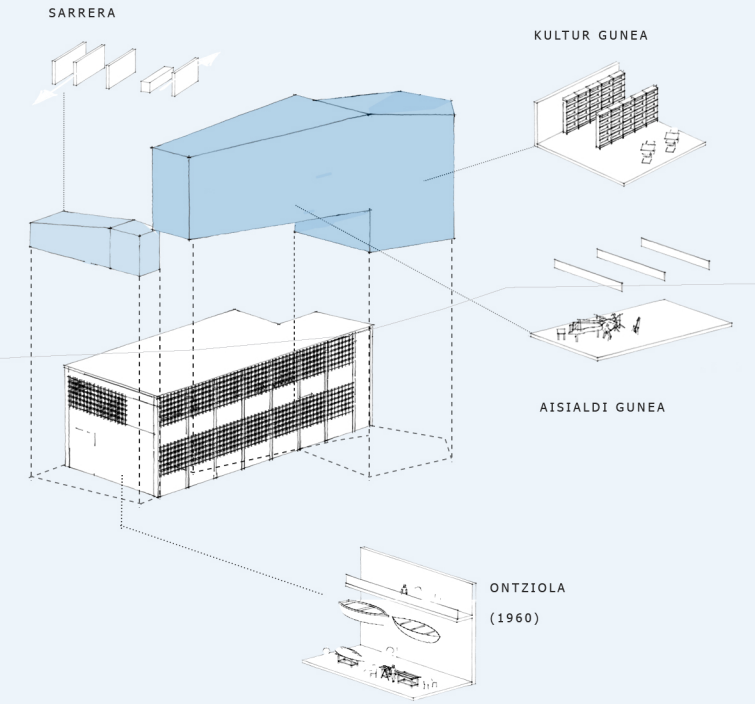
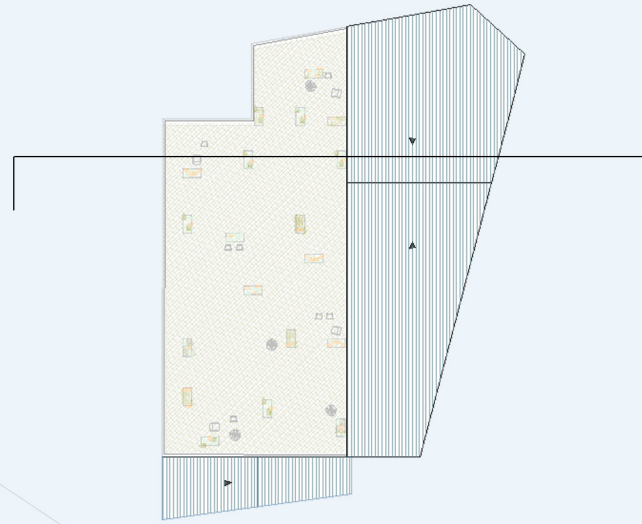


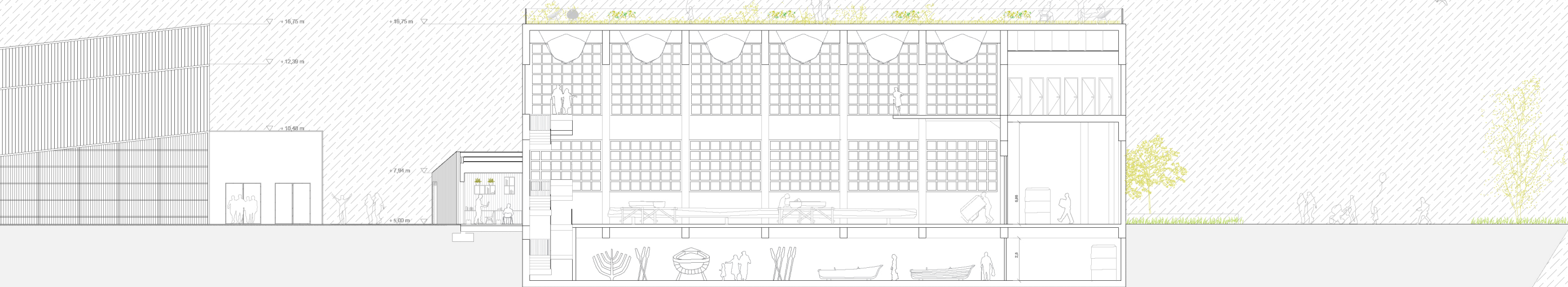
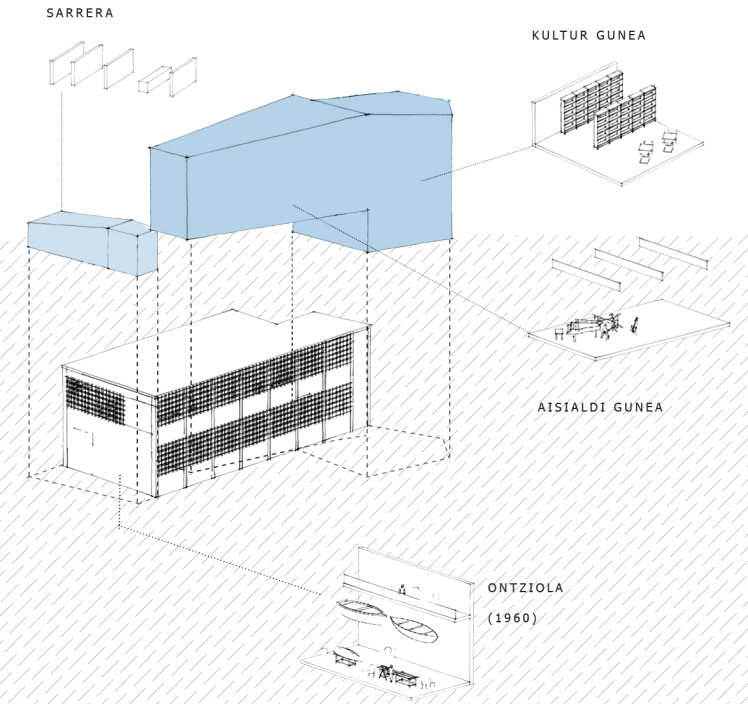
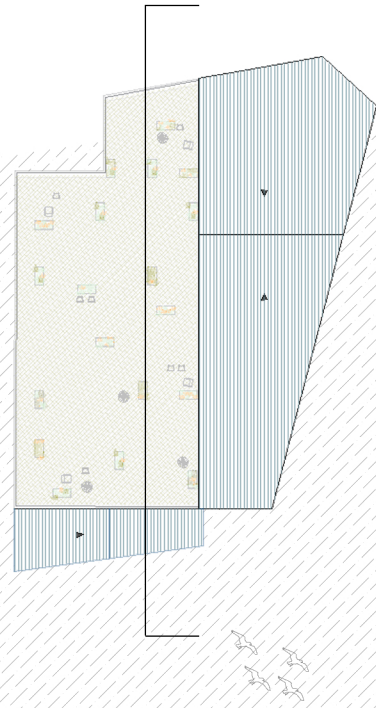
6

HIRIGINTZA









6.63

8.04

3.68

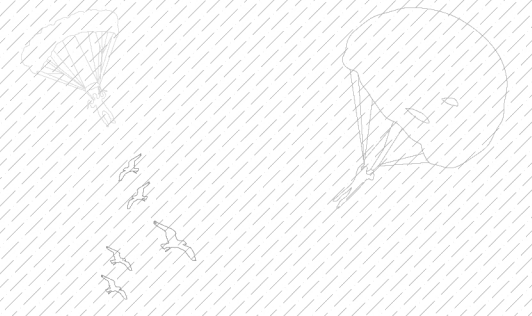
28.43

6.91

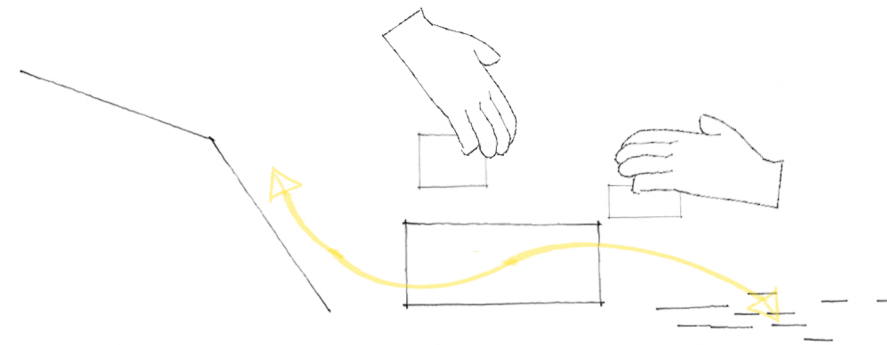
7.16

13.07

5.91



**2.- ERABILERA DESBERDINEN
KONEXIO EGOKIA**



ERAIKUNTZA

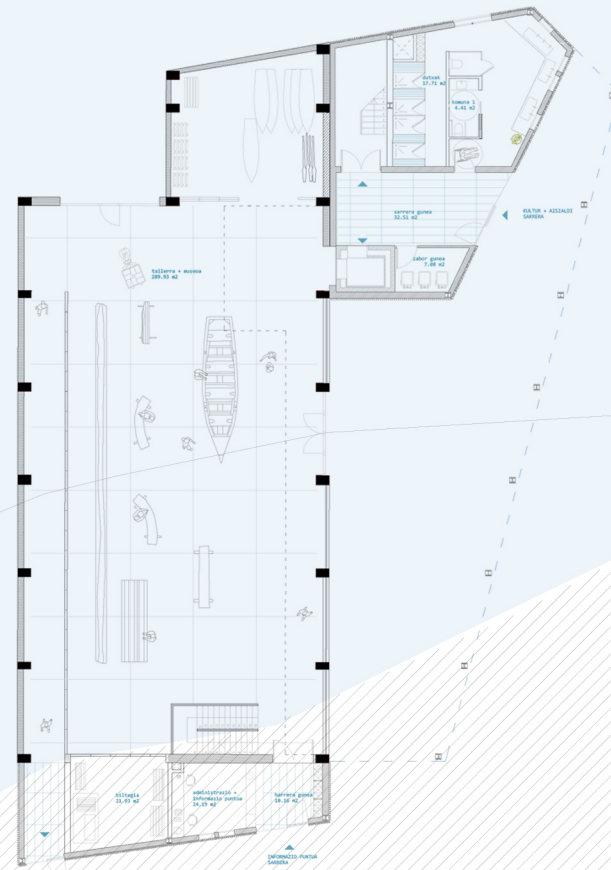
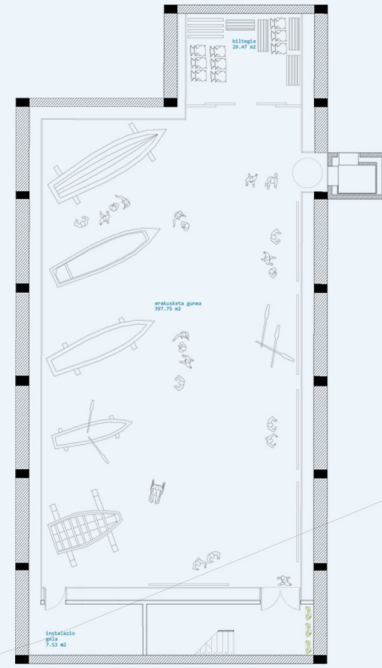
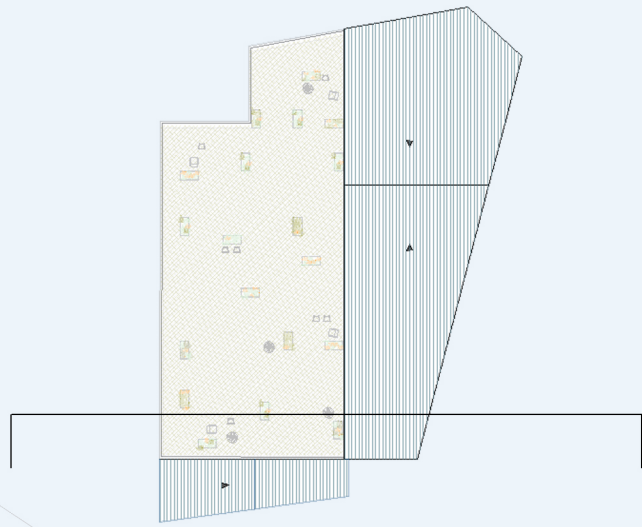
SUTEAK

EGITURA

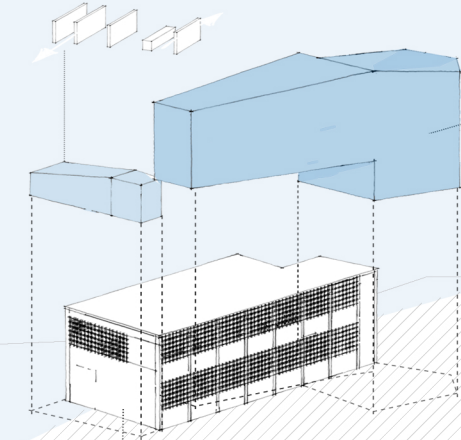
DOKUMENTAZIO GRAFIKOA

Ebaketa

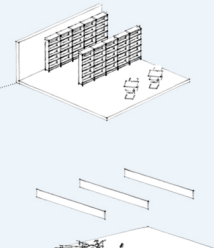
E = 1/200



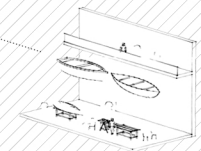
ADMINISTRAZIO ERABILERA



ERABILERA PUBLIKOA



INDUSTRIA ERABILERA
(1960)

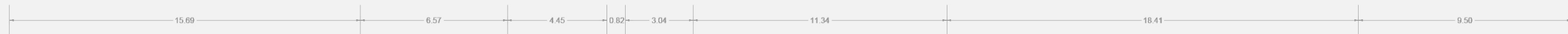
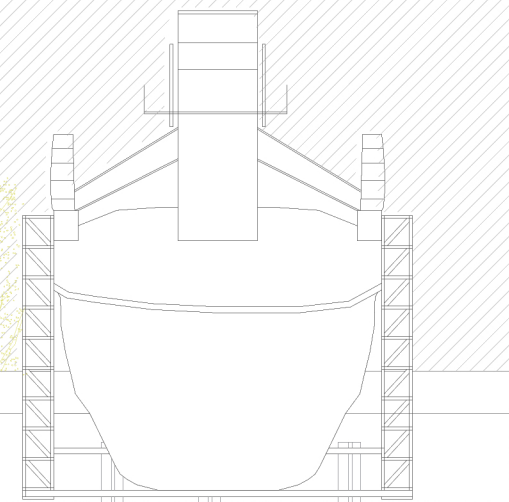
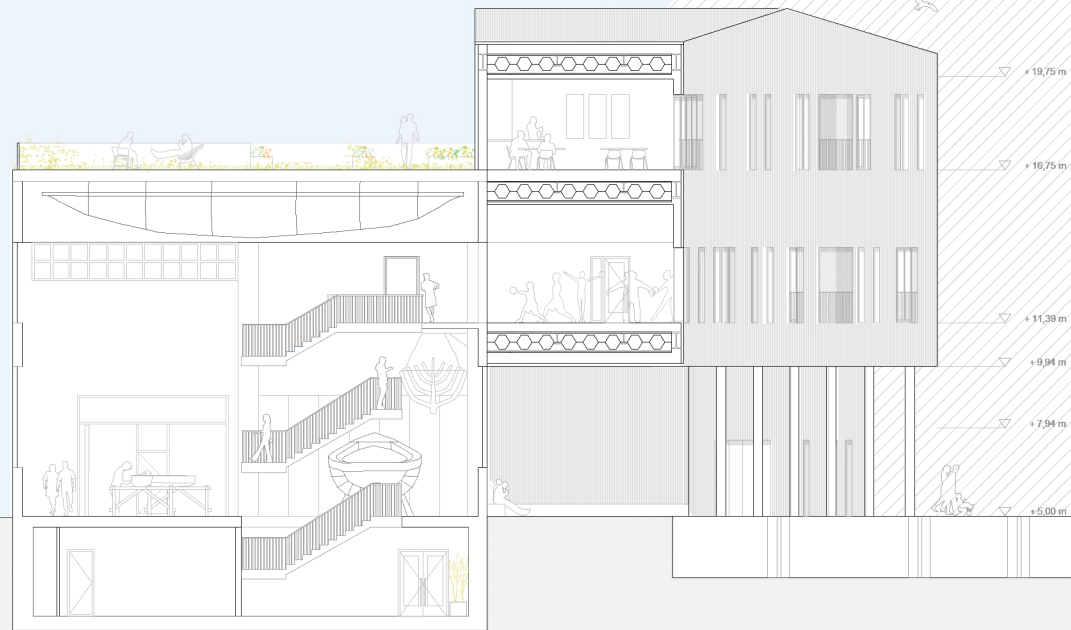


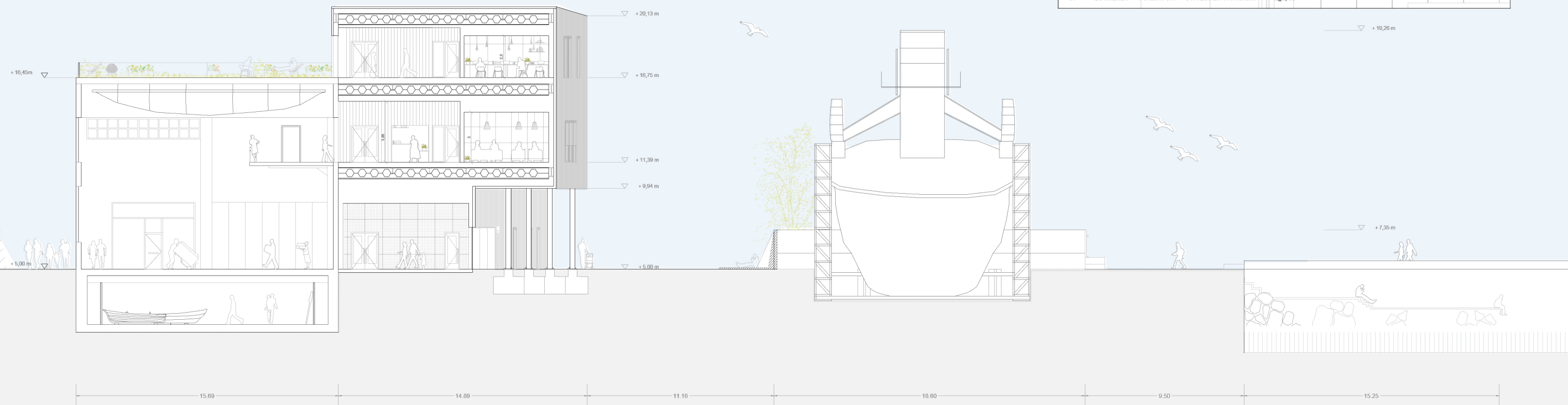
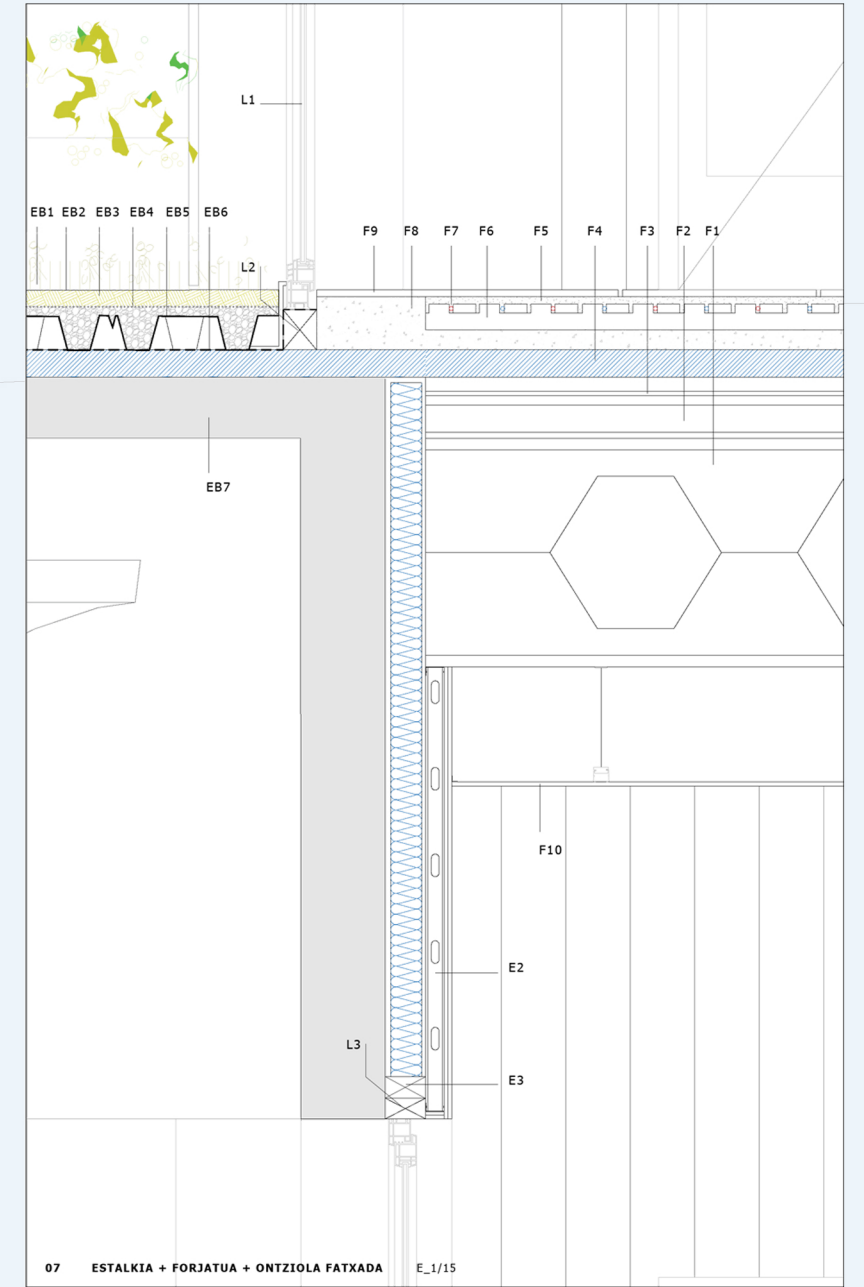
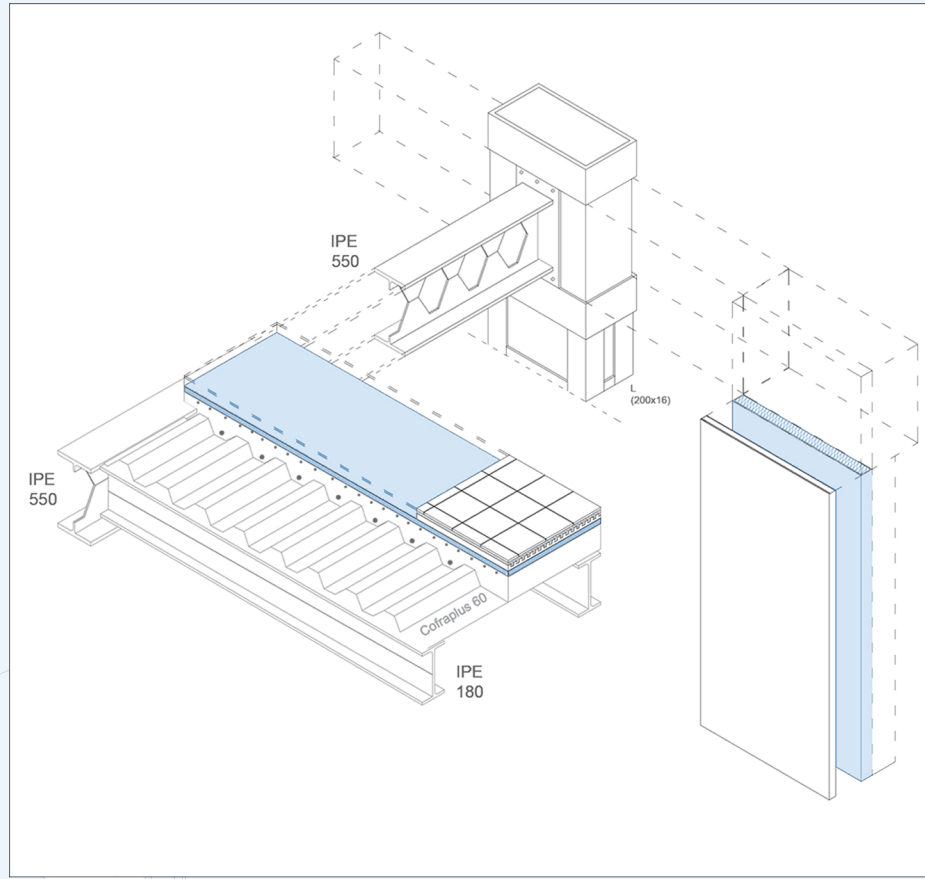
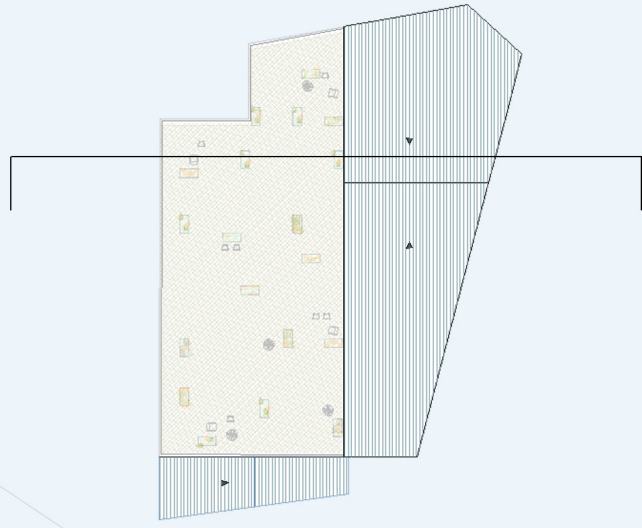
INDUSTRIA ERABILERA

+ 1078,92 m²
(Ontziola + administrazio gunea)

EKIPAMENDU PUBLIKOA

+ 835,13 m²
(Kultur eta aisialdi gunea)



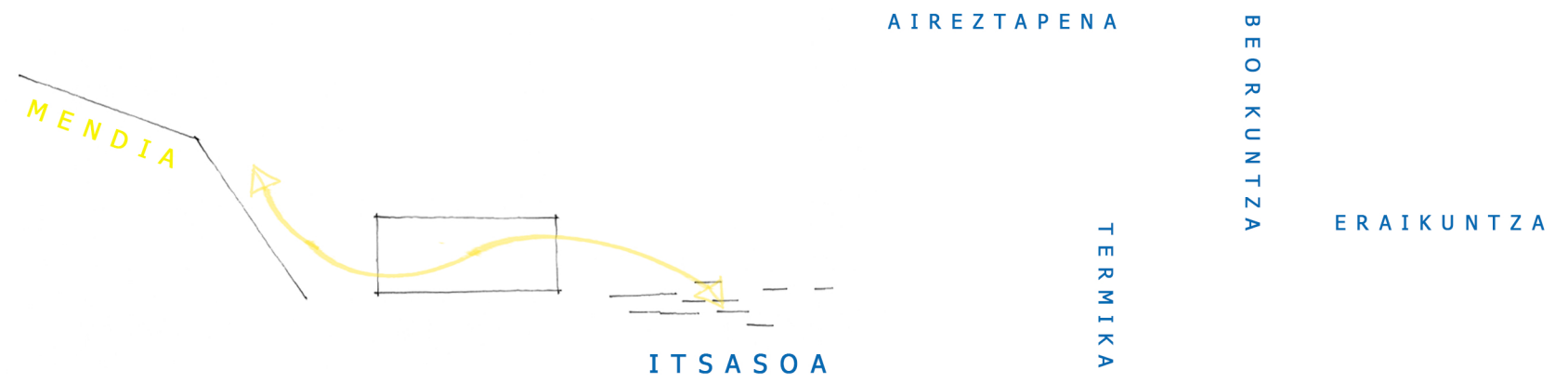


07 ESTALKIA + FORJATUA + ONTZIOLA FATXADA E_1/15

+ 19,25 m

+ 7,35 m

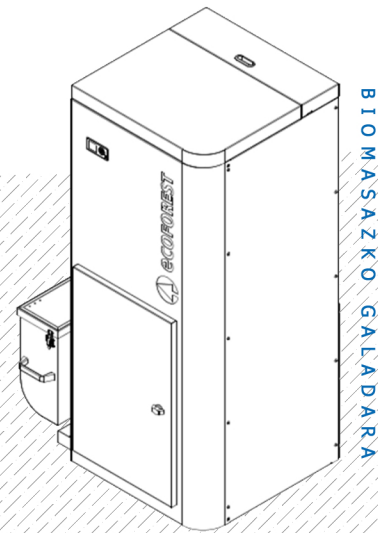
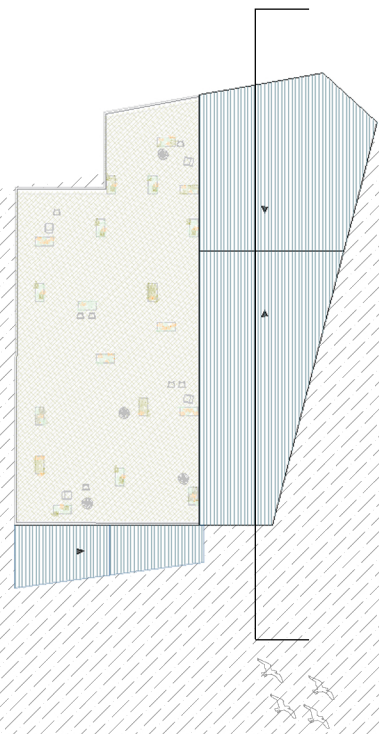
**3.- INGURUAREKIKO ERRESPETU
ETA KOHERENTZIA**



DOKUMENTAZIO GRAFIKOA

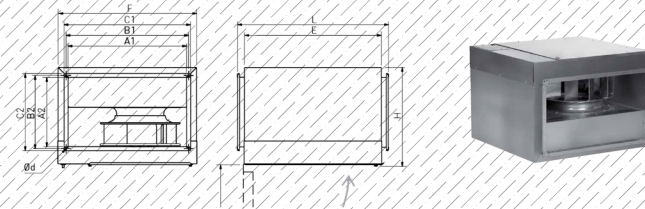
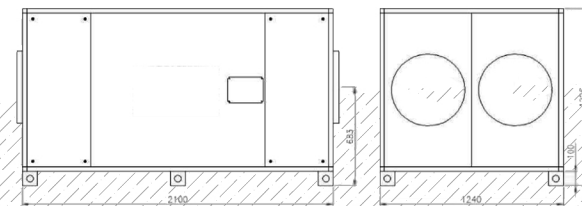
Ebaketa

E = 1/200

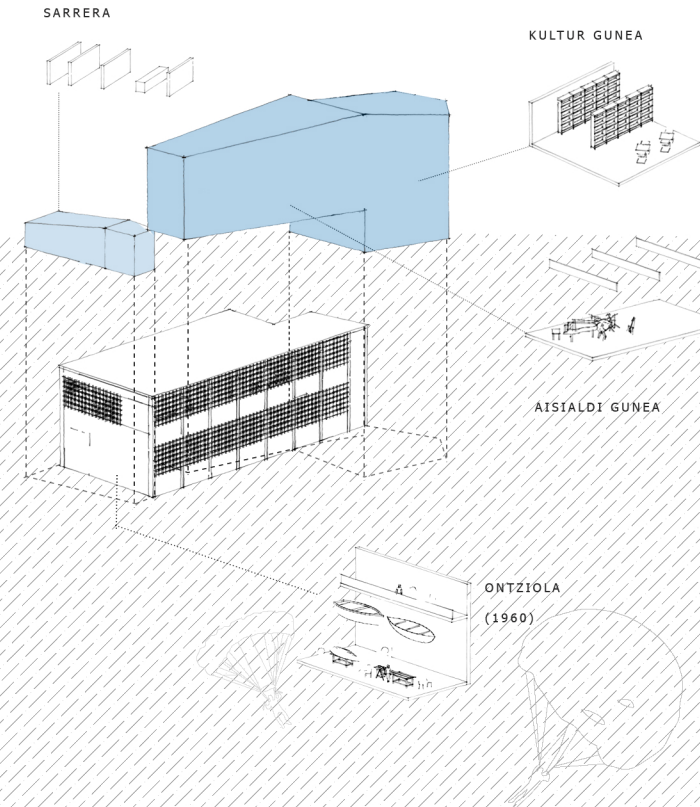


BIOMASAZKO GALADARA

BERO BERRESKURATZAILEAK



HAZGAILUAK

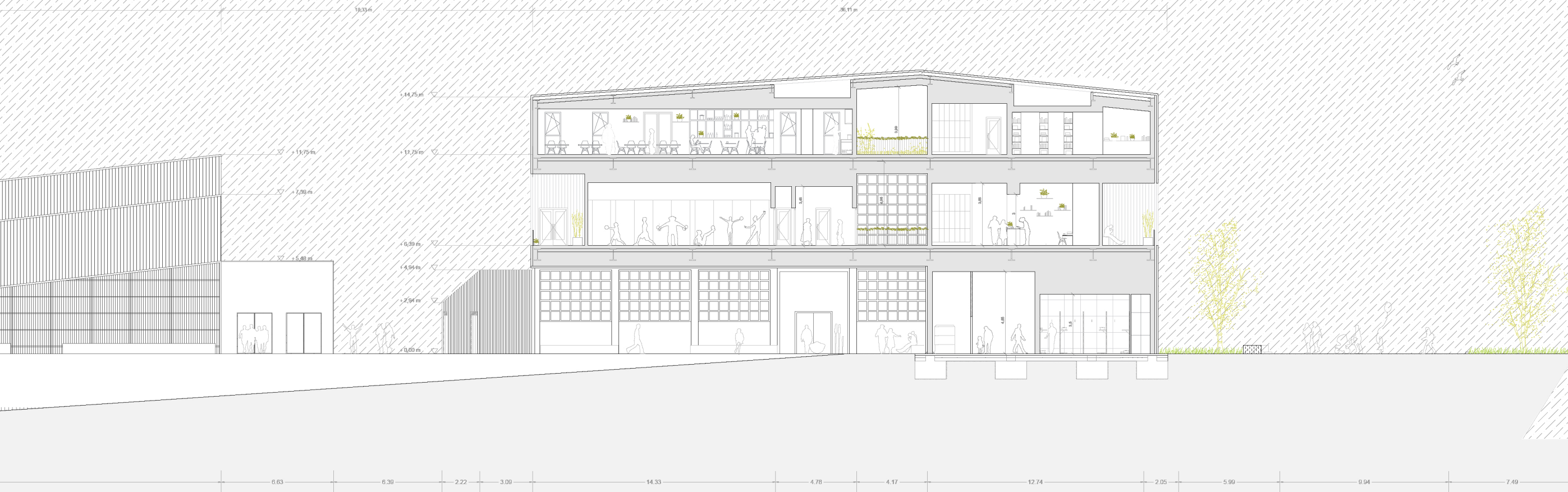


SARRERA

KULTUR GUNEA

AISIALDI GUNEA

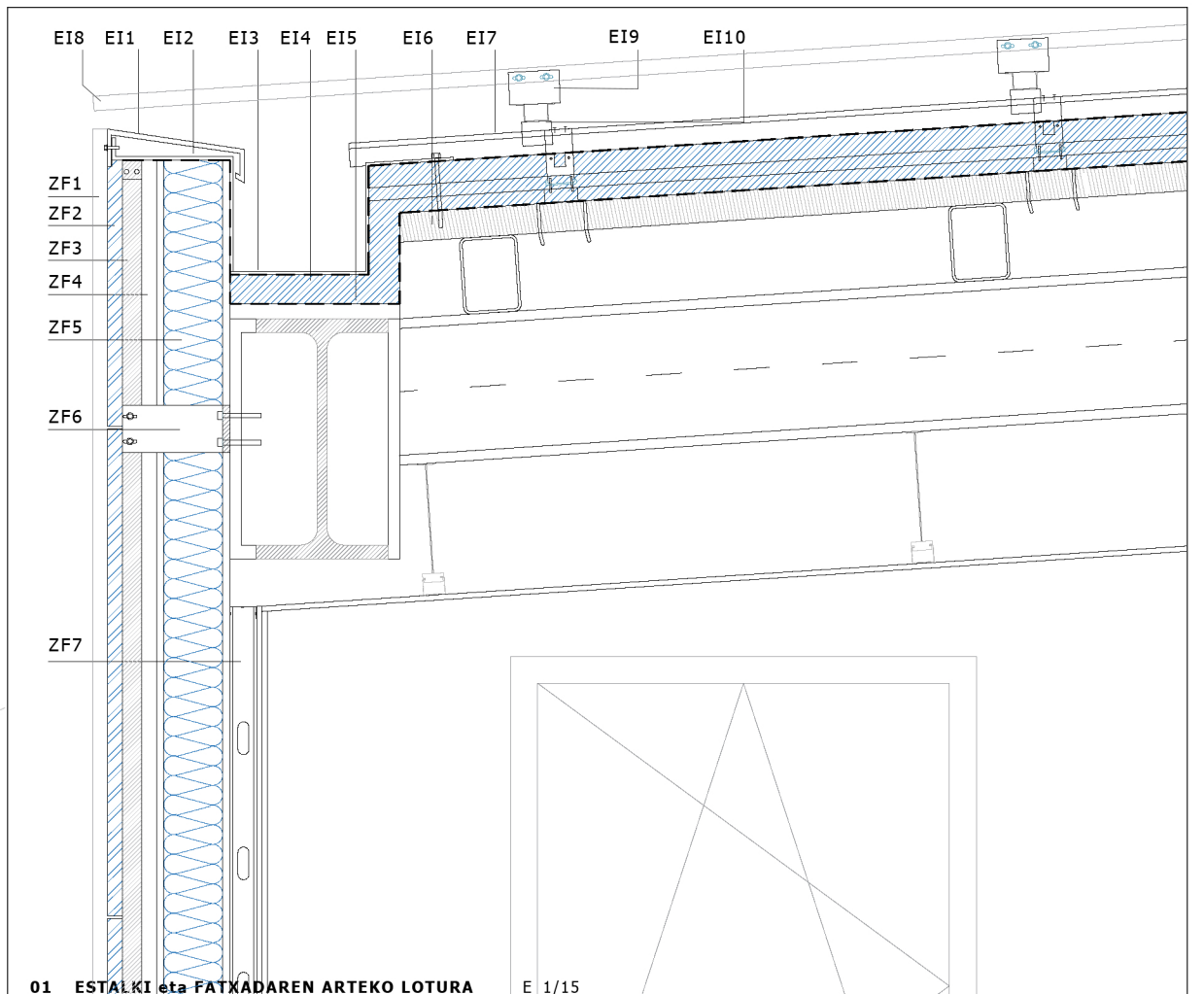
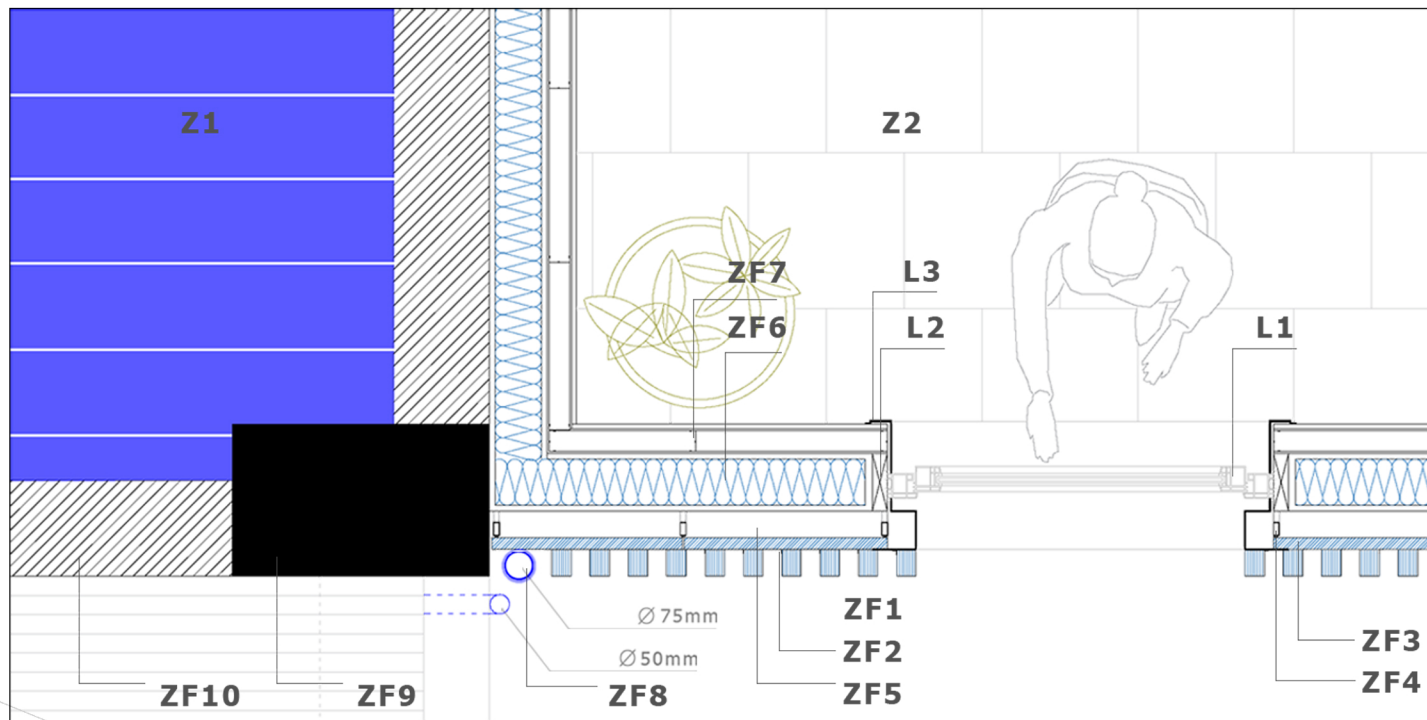
ONTZIOLA (1960)



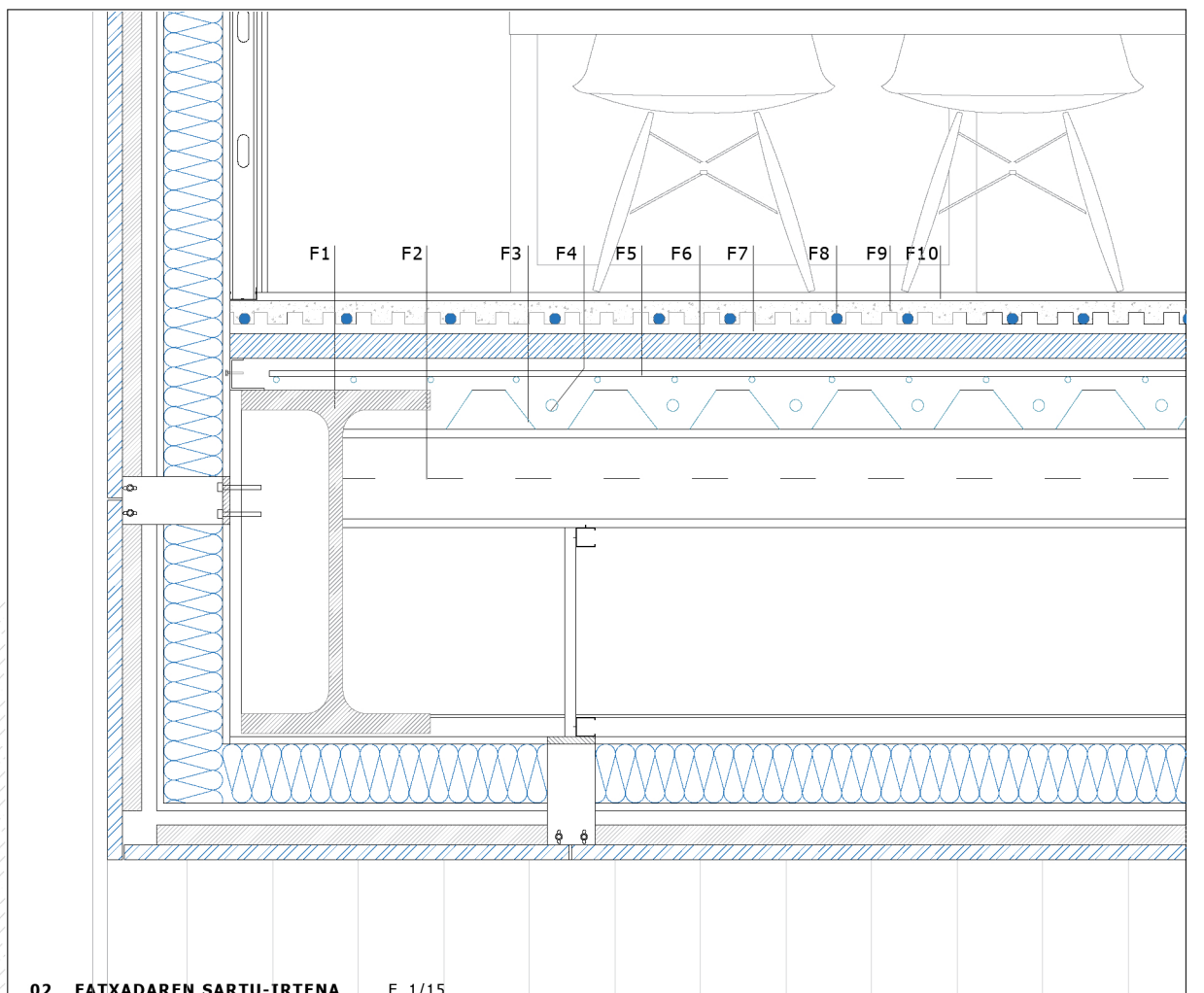
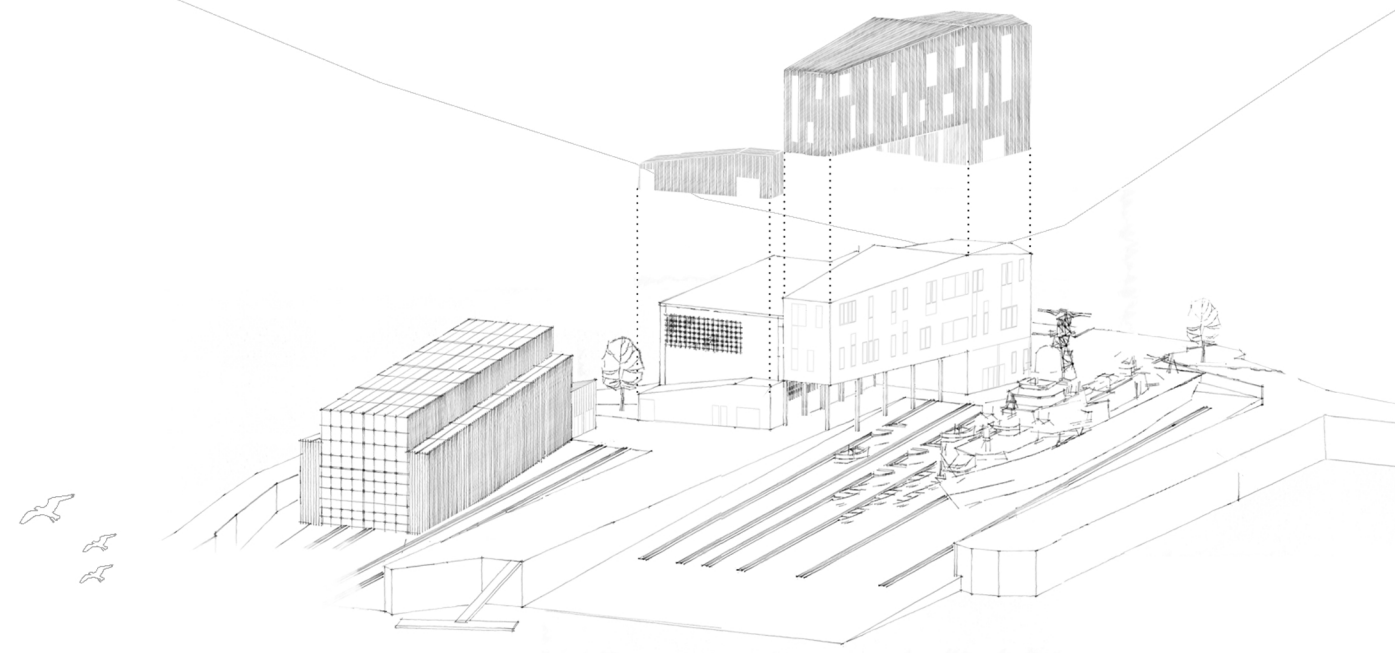
18,33 m 36,11 m

+14,75 m
+11,75 m
+7,89 m
0,00 m

6.03 6.30 2.22 3.00 14.33 4.78 4.17 12.74 2.05 5.90 0.94 7.40

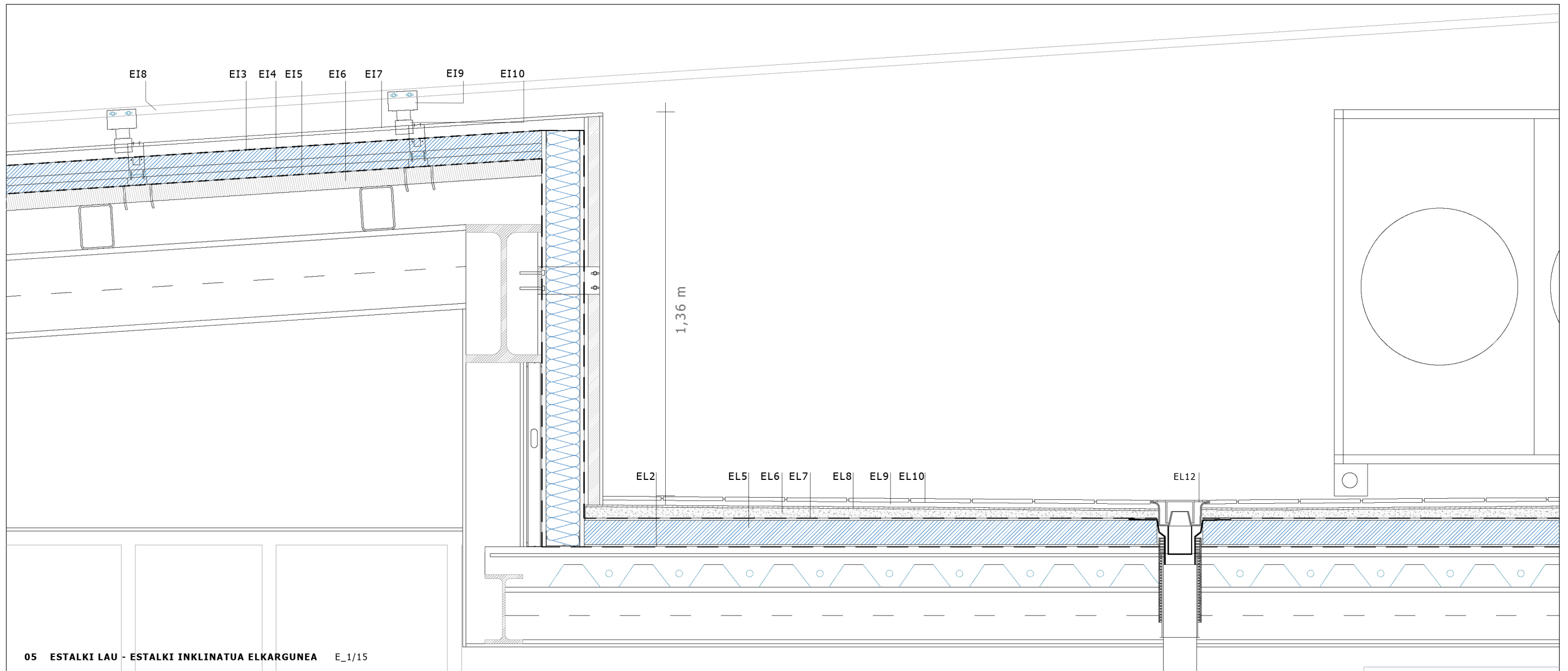
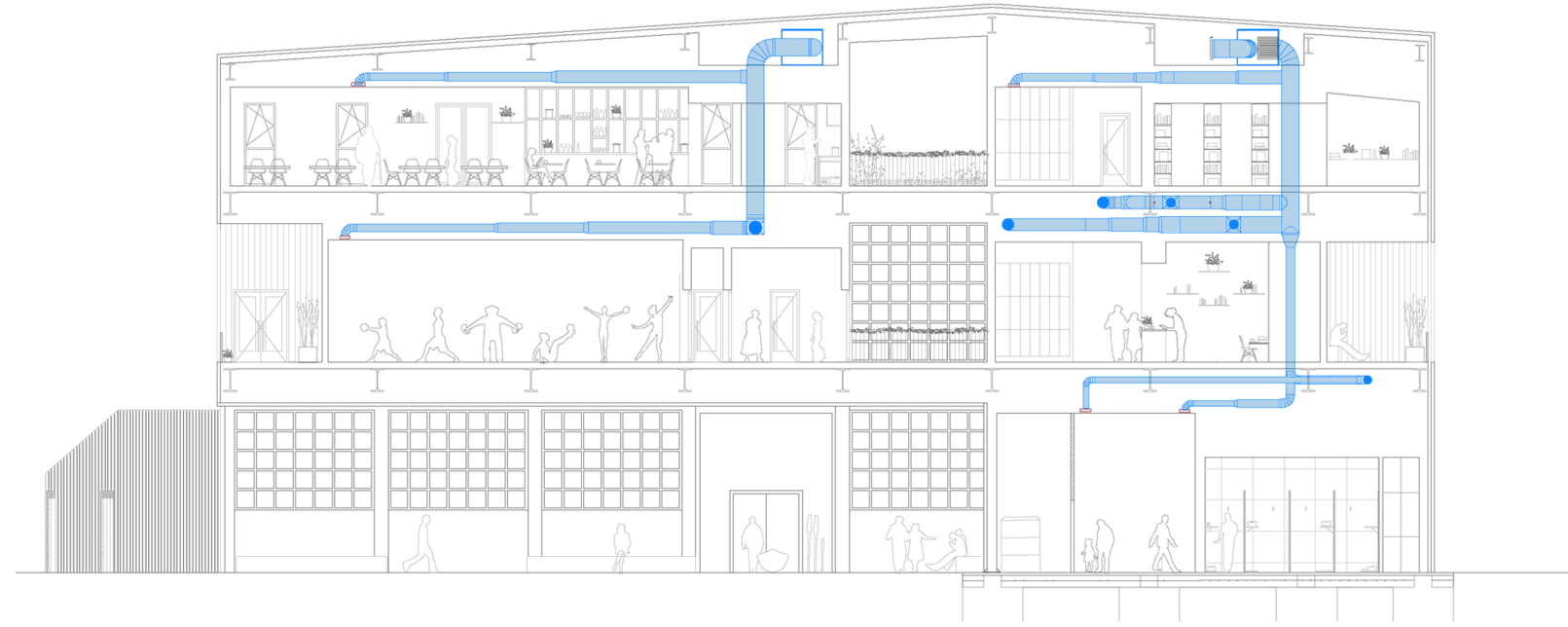


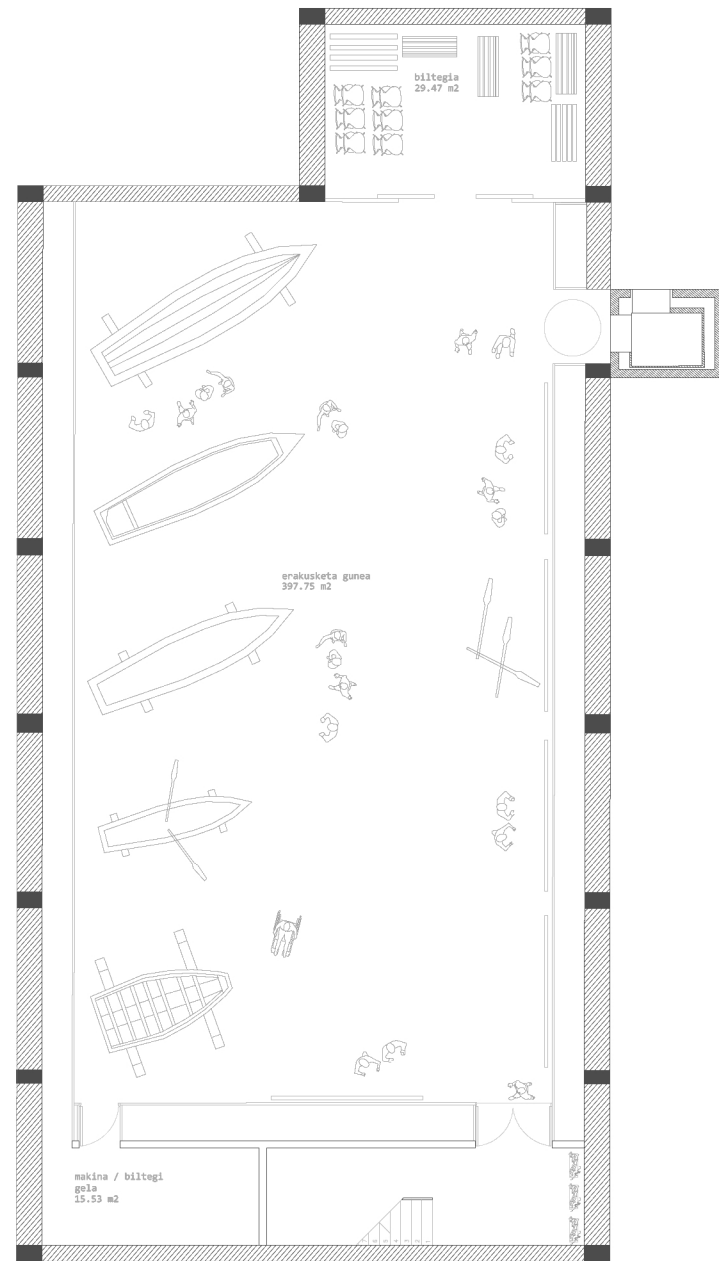
01 ESTALKI eta FATXADAREN ARTEKO LOTURA E_1/15



02 FATXADAREN SARTU-IRTEENA E_1/15

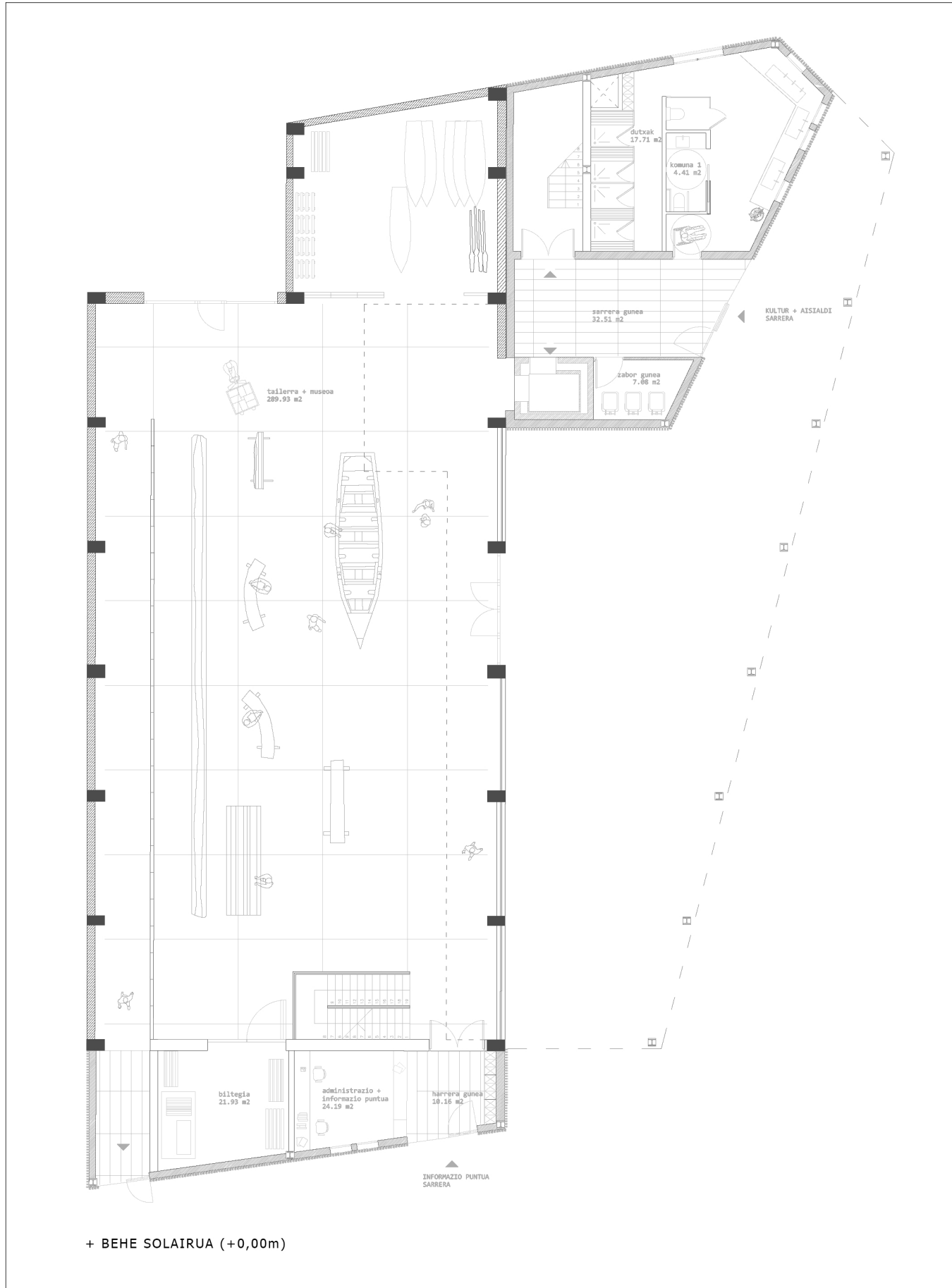




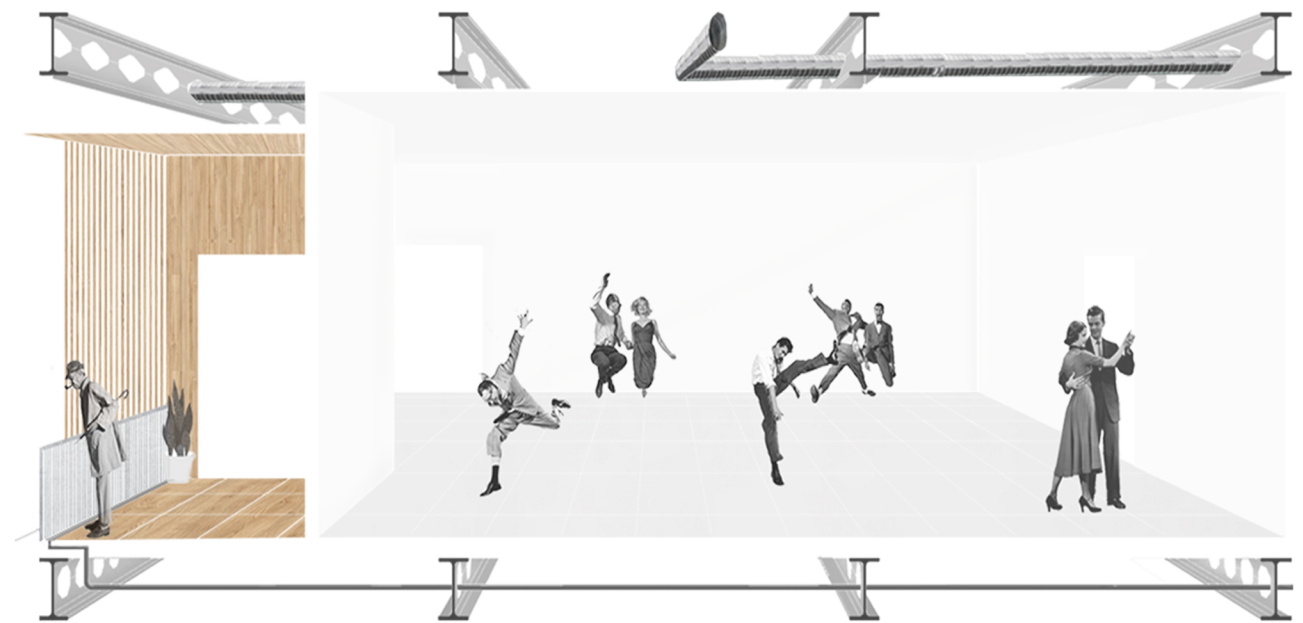


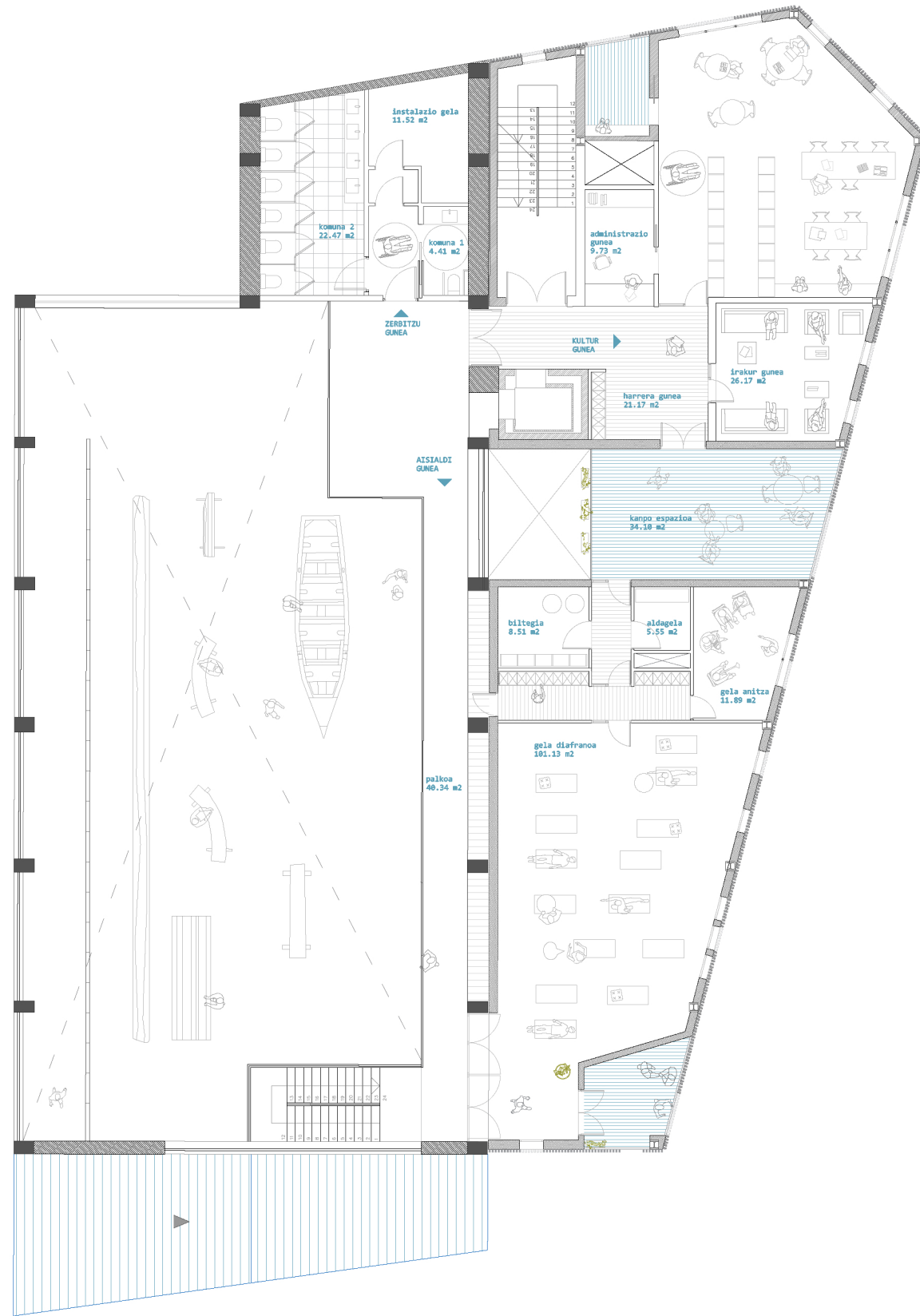
+ SOTO SOLAIRUA (-3,31m)





+ BEHE SOLAIRUA (+0,00m)

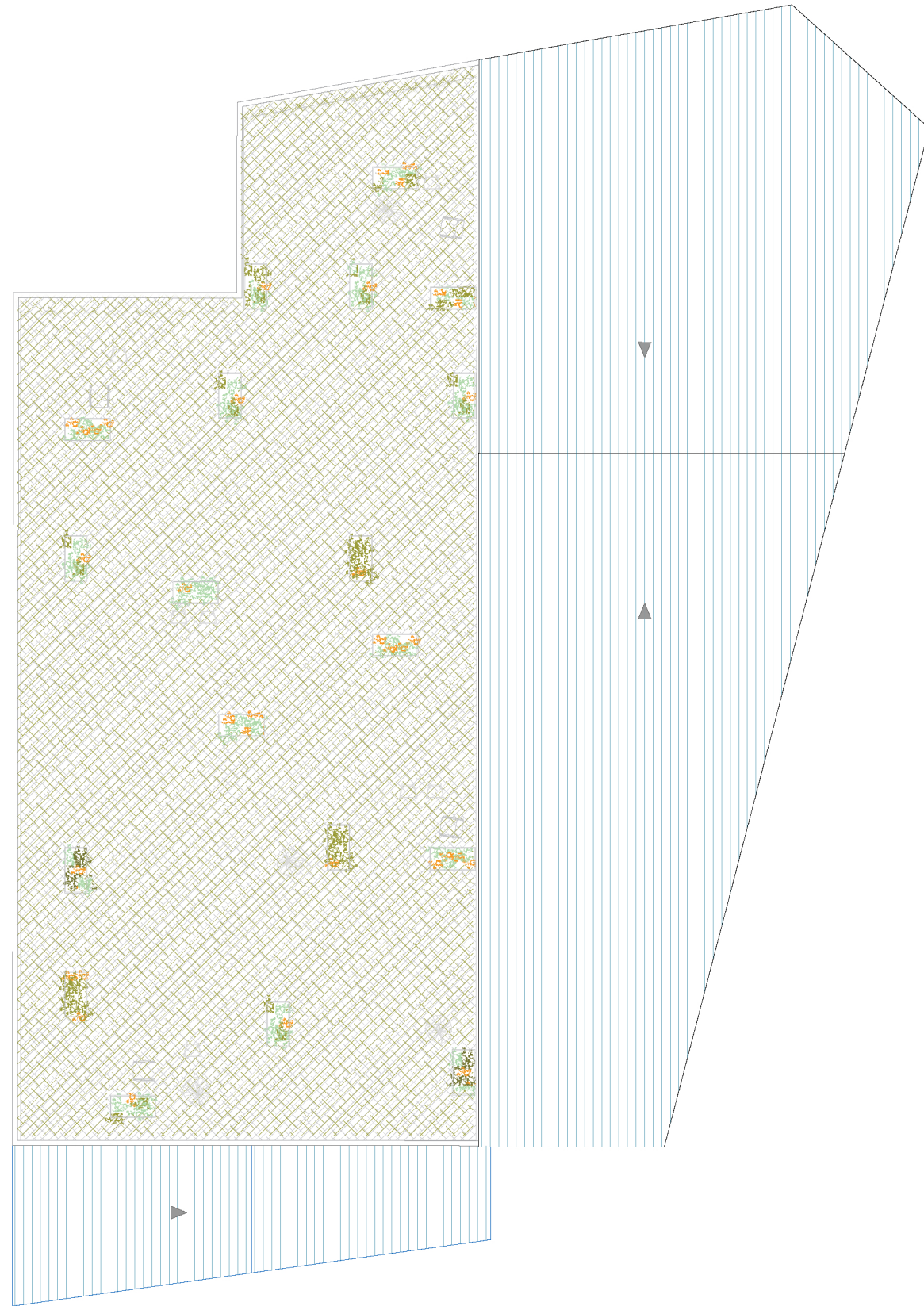




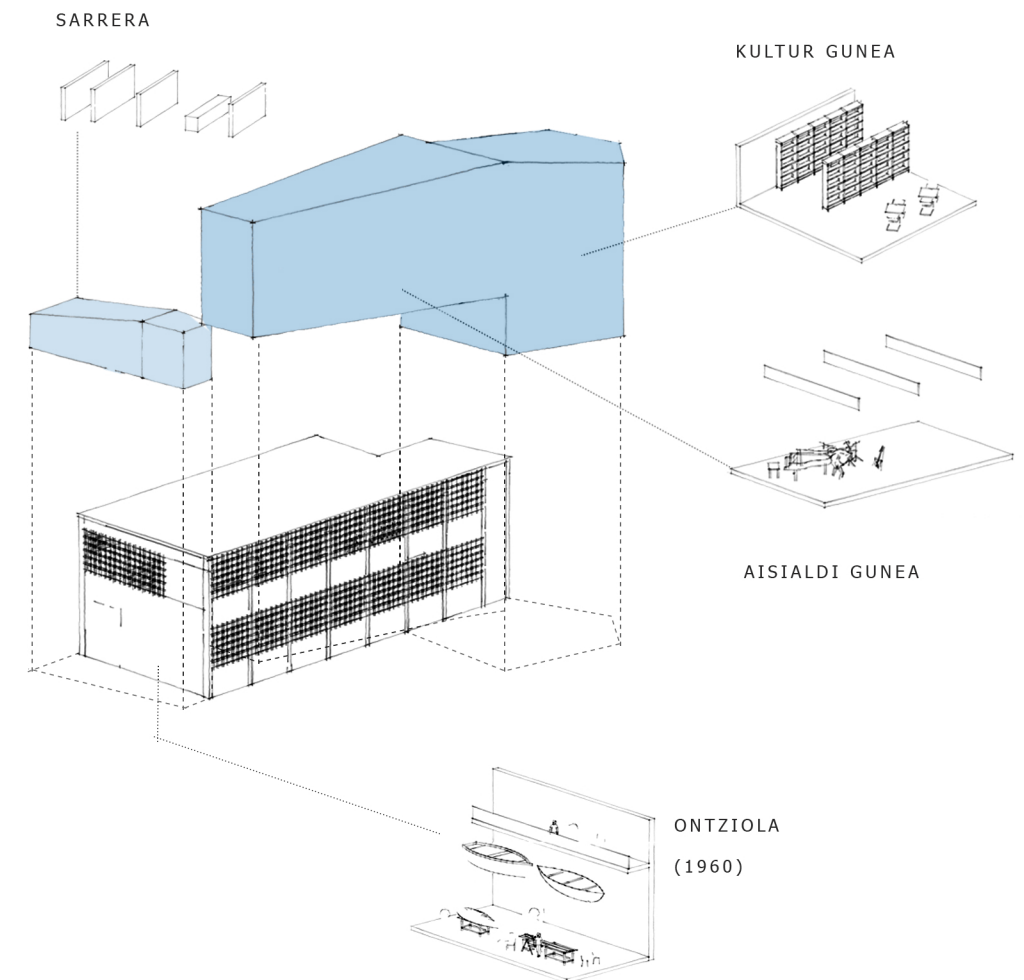
+ lehen solairua (+6,40m)



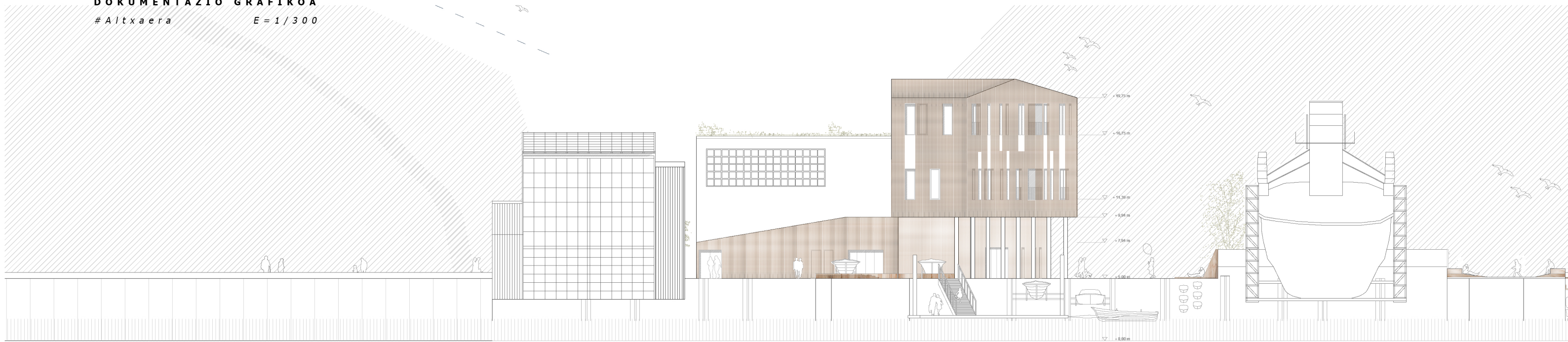
+ bigarren solairua (+11,40m)



+ estalkia (+16,40m)



DOKUMENTAZIO GRAFIKOA
Altxaera E = 1/300



EKIALDEKO ALTXAERA



IPARRALDEKO ALTXAERA

